

Anti-CaMK2 alpha/delta (pT286) Antibody
Rabbit polyclonal antibody to CaMK2 alpha/delta (pT286)
Catalog # AP60234

Specification

Anti-CaMK2 alpha/delta (pT286) Antibody - Product Information

Application	WB, IF
Primary Accession	Q9UQM7 , Q13557
Other Accession	P11798 , Q6PHZ2
Reactivity	Human, Mouse, Rat, Rabbit, Monkey, Pig, Chicken, Bovine
Host	Rabbit
Clonality	Polyclonal

Anti-CaMK2 alpha/delta (pT286) Antibody - Additional Information

Other Names

CAMK2A; CAMKA; KIAA0968; Calcium/calmodulin-dependent protein kinase type II subunit alpha; CaM kinase II subunit alpha; CaMK-II subunit alpha; CAMK2D; CAMKD; Calcium/calmodulin-dependent protein kinase type II subunit delta; CaM kinase II subunit delta; CaMK-II subunit delta

Target/Specificity

Recognizes endogenous levels of CaMK2 alpha/delta (pT286) protein.

Dilution

WB~~WB (1/500 - 1/1000), IH (1/100 - 1/200), IF/IC (1/100 - 1/500)
IF~~WB (1/500 - 1/1000), IH (1/100 - 1/200), IF/IC (1/100 - 1/500)

Format

Liquid in 0.42% Potassium phosphate, 0.87% Sodium chloride, pH 7.3, 30% glycerol, and 0.09% (W/V) sodium azide.

Storage

Store at -20 °C. Stable for 12 months from date of receipt

Anti-CaMK2 alpha/delta (pT286) Antibody - Protein Information

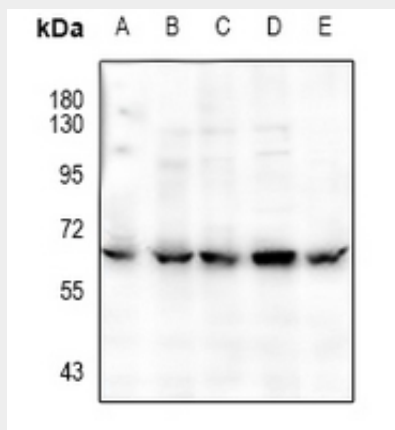
Anti-CaMK2 alpha/delta (pT286) Antibody - Protocols

Provided below are standard protocols that you may find useful for product applications.

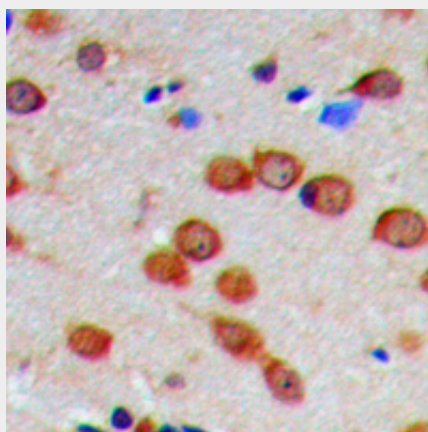
- [Western Blot](#)
- [Blocking Peptides](#)
- [Dot Blot](#)
- [Immunohistochemistry](#)

- [Immunofluorescence](#)
- [Immunoprecipitation](#)
- [Flow Cytometry](#)
- [Cell Culture](#)

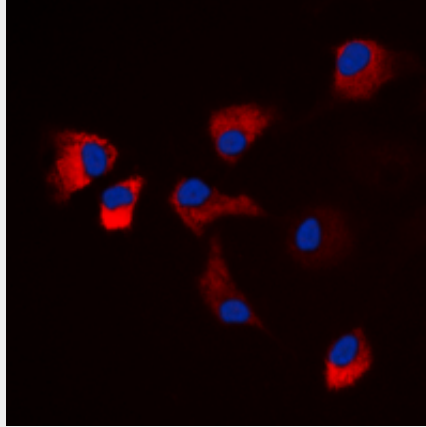
Anti-CaMK2 alpha/delta (pT286) Antibody - Images



Western blot analysis of CaMK2 alpha/delta (pT286) expression in HEK293T (A), H1792 (B), HepG2 (C), Panc1 (D), AML12 (E) whole cell lysates.



Immunohistochemical analysis of CaMK2 alpha/delta (pT286) staining in human brain formalin fixed paraffin embedded tissue section. The section was pre-treated using heat mediated antigen retrieval with sodium citrate buffer (pH 6.0). The section was then incubated with the antibody at room temperature and detected using an HRP conjugated compact polymer system. DAB was used as the chromogen. The section was then counterstained with haematoxylin and mounted with DPX.



Immunofluorescent analysis of CaMK2 alpha/delta (pT286) staining in HeLa cells. Formalin-fixed cells were permeabilized with 0.1% Triton X-100 in TBS for 5-10 minutes and blocked with 3% BSA-PBS for 30 minutes at room temperature. Cells were probed with the primary antibody in 3% BSA-PBS and incubated overnight at 4 °C in a humidified chamber. Cells were washed with PBST and incubated with a DyLight 594-conjugated secondary antibody (red) in PBS at room temperature in the dark. DAPI was used to stain the cell nuclei (blue).

Anti-CaMK2 alpha/delta (pT286) Antibody - Background

KLH-conjugated synthetic peptide encompassing a sequence within the center region of human CaMK2 alpha/delta (pT286). The exact sequence is proprietary.