

**Anti-BAP31 Antibody**  
Rabbit polyclonal antibody to BAP31  
Catalog # AP60230

## Specification

---

### Anti-BAP31 Antibody - Product Information

Application	WB
Primary Accession	<a href="#">P51572</a>
Other Accession	<a href="#">O61335</a>
Reactivity	Human, Mouse, Rat
Host	Rabbit
Clonality	Polyclonal
Calculated MW	27992

### Anti-BAP31 Antibody - Additional Information

Gene ID 10134

#### Other Names

BAP31; DXS1357E; B-cell receptor-associated protein 31; BCR-associated protein 31; Bap31; 6C6-AG tumor-associated antigen; Protein CDM; p28

#### Target/Specificity

Recognizes endogenous levels of BAP31 protein.

#### Dilution

WB~~WB (1/500 - 1/1000)

#### Format

Liquid in 0.42% Potassium phosphate, 0.87% Sodium chloride, pH 7.3, 30% glycerol, and 0.09% (W/V) sodium azide.

#### Storage

Store at -20 °C. Stable for 12 months from date of receipt

### Anti-BAP31 Antibody - Protein Information

Name BCAP31 ([HGNC:16695](#))

#### Function

Functions as a chaperone protein (PubMed: [18287538](http://www.uniprot.org/citations/18287538), PubMed: [9396746](http://www.uniprot.org/citations/9396746)). Is one of the most abundant endoplasmic reticulum (ER) proteins (PubMed: [18287538](http://www.uniprot.org/citations/18287538), PubMed: [9396746](http://www.uniprot.org/citations/9396746)). Plays a role in the export of secreted proteins in the ER, the recognition of abnormally folded protein and their targeting to the ER associated-degradation (ERAD) (PubMed: [18287538](http://www.uniprot.org/citations/18287538), PubMed: [18287538](http://www.uniprot.org/citations/18287538), PubMed: [18287538](http://www.uniprot.org/citations/18287538)).

<http://www.uniprot.org/citations/9396746> target="\_blank">9396746</a>). Also serves as a cargo receptor for the export of transmembrane proteins (By similarity). Plays a role in the assembly of the mitochondrial membrane respiratory chain NADH dehydrogenase (Complex I) by stimulating the translocation of NDUFS4 and NDUFB11 from the cytosol to the mitochondria via interaction with TOMM40 (PubMed:<a href="http://www.uniprot.org/citations/31206022" target="\_blank">31206022</a>). In response to ER stress, delocalizes from the ER-mitochondria contact sites and binds BCL2 (PubMed:<a href="http://www.uniprot.org/citations/31206022" target="\_blank">31206022</a>). May be involved in CASP8-mediated apoptosis (PubMed:<a href="http://www.uniprot.org/citations/10958671" target="\_blank">10958671</a>).

#### Cellular Location

Endoplasmic reticulum membrane; Multi-pass membrane protein Endoplasmic reticulum-Golgi intermediate compartment membrane; Multi-pass membrane protein. Note=May shuttle between the ER and the intermediate compartment/cis-Golgi complex (PubMed:9396746). Associates with the mitochondria-associated endoplasmic reticulum membrane via interaction with TOMM40 (PubMed:31206022)

#### Tissue Location

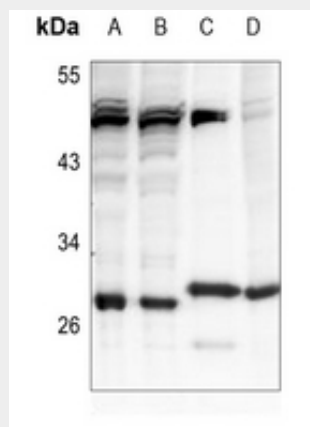
Ubiquitous. Highly expressed in neurons and discrete endocrine cells.

#### Anti-BAP31 Antibody - Protocols

Provided below are standard protocols that you may find useful for product applications.

- [Western Blot](#)
- [Blocking Peptides](#)
- [Dot Blot](#)
- [Immunohistochemistry](#)
- [Immunofluorescence](#)
- [Immunoprecipitation](#)
- [Flow Cytometry](#)
- [Cell Culture](#)

#### Anti-BAP31 Antibody - Images



Western blot analysis of BAP31 expression in THP1 (A), HepG2 (B), mouse lung (C), rat spleen (D) whole cell lysates.

#### Anti-BAP31 Antibody - Background

KLH-conjugated synthetic peptide encompassing a sequence within the center region of human

BAP31. The exact sequence is proprietary.