

**Anti-Apolipoprotein L1 Antibody**  
**Rabbit polyclonal antibody to Apolipoprotein L1**  
**Catalog # AP60221**

**Specification**

---

**Anti-Apolipoprotein L1 Antibody - Product Information**

Application	<b>WB</b>
Primary Accession	<a href="#">O14791</a>
Reactivity	<b>Human</b>
Host	<b>Rabbit</b>
Clonality	<b>Polyclonal</b>
Calculated MW	<b>43974</b>

**Anti-Apolipoprotein L1 Antibody - Additional Information**

**Gene ID** 8542

**Other Names**

APOL; Apolipoprotein L1; Apolipoprotein L; Apo-L; ApoL; Apolipoprotein L-I; ApoL-I

**Target/Specificity**

Recognizes endogenous levels of Apolipoprotein L1 protein.

**Dilution**

WB~~WB (1/500 - 1/1000)

**Format**

Liquid in 0.42% Potassium phosphate, 0.87% Sodium chloride, pH 7.3, 30% glycerol, and 0.09% (W/V) sodium azide.

**Storage**

Store at -20 °C. Stable for 12 months from date of receipt

**Anti-Apolipoprotein L1 Antibody - Protein Information**

**Name** APOL1

**Synonyms** APOL

**Function**

May play a role in lipid exchange and transport throughout the body. May participate in reverse cholesterol transport from peripheral cells to the liver.

**Cellular Location**

Secreted.

**Tissue Location**

Plasma. Found on APOA-I-containing high density lipoprotein (HDL3). Expressed in pancreas, lung,

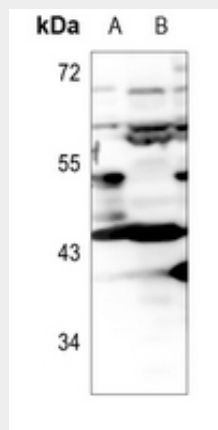
prostate, liver, placenta and spleen

### Anti-Apolipoprotein L1 Antibody - Protocols

Provided below are standard protocols that you may find useful for product applications.

- [Western Blot](#)
- [Blocking Peptides](#)
- [Dot Blot](#)
- [Immunohistochemistry](#)
- [Immunofluorescence](#)
- [Immunoprecipitation](#)
- [Flow Cytometry](#)
- [Cell Culture](#)

### Anti-Apolipoprotein L1 Antibody - Images



Western blot analysis of Apolipoprotein L1 expression in HEK293T (A), A549 (B) whole cell lysates.

### Anti-Apolipoprotein L1 Antibody - Background

KLH-conjugated synthetic peptide encompassing a sequence within the center region of human Apolipoprotein L1. The exact sequence is proprietary.