

**Anti-Annexin A7 Antibody**  
**Rabbit polyclonal antibody to Annexin A7**  
**Catalog # AP60219****Specification**

---

**Anti-Annexin A7 Antibody - Product Information**

Application	<b>WB</b>
Primary Accession	<a href="#">P20073</a>
Other Accession	<a href="#">Q07076</a>
Reactivity	<b>Human, Mouse, Rabbit, Monkey, Pig, Bovine</b>
Host	<b>Rabbit</b>
Clonality	<b>Polyclonal</b>
Calculated MW	<b>52739</b>

**Anti-Annexin A7 Antibody - Additional Information****Gene ID** 310**Other Names**

ANX7; SNX; Annexin A7; Annexin VII; Annexin-7; Synexin

**Target/Specificity**

Recognizes endogenous levels of Annexin A7 protein.

**Dilution**

WB~~WB (1/500 - 1/1000)

**Format**

Liquid in 0.42% Potassium phosphate, 0.87% Sodium chloride, pH 7.3, 30% glycerol, and 0.09% (W/V) sodium azide.

**Storage**

Store at -20 °C. Stable for 12 months from date of receipt

**Anti-Annexin A7 Antibody - Protein Information****Name** ANXA7**Synonyms** ANX7, SNX**Function**

Calcium/phospholipid-binding protein which promotes membrane fusion and is involved in exocytosis.

**Tissue Location**

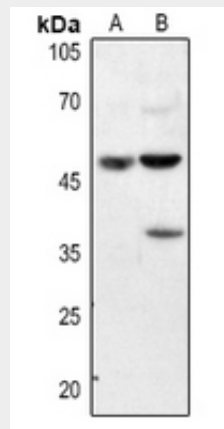
Isoform 1 is expressed in brain, heart and skeletal muscle. Isoform 2 is more abundant in liver, lung, kidney, spleen, fibroblasts and placenta.

## Anti-Annexin A7 Antibody - Protocols

Provided below are standard protocols that you may find useful for product applications.

- [Western Blot](#)
- [Blocking Peptides](#)
- [Dot Blot](#)
- [Immunohistochemistry](#)
- [Immunofluorescence](#)
- [Immunoprecipitation](#)
- [Flow Cytometry](#)
- [Cell Culture](#)

## Anti-Annexin A7 Antibody - Images



Western blot analysis of Annexin A7 expression in HEK293T (A), HeLa (B) whole cell lysates.

## Anti-Annexin A7 Antibody - Background

KLH-conjugated synthetic peptide encompassing a sequence within the center region of human Annexin A7. The exact sequence is proprietary.