

Anti-Amphiphysin 1 Antibody
Rabbit polyclonal antibody to Amphiphysin 1
Catalog # AP60218

Specification

Anti-Amphiphysin 1 Antibody - Product Information

Application	WB
Primary Accession	P49418
Other Accession	Q7TQF7
Reactivity	Human, Mouse, Rat, Monkey, Bovine
Host	Rabbit
Clonality	Polyclonal
Calculated MW	76257

Anti-Amphiphysin 1 Antibody - Additional Information

Gene ID 273

Other Names

AMPH1; Amphiphysin

Target/Specificity

Recognizes endogenous levels of Amphiphysin 1 protein.

Dilution

WB~~WB (1/500 - 1/1000)

Format

Liquid in 0.42% Potassium phosphate, 0.87% Sodium chloride, pH 7.3, 30% glycerol, and 0.09% (W/V) sodium azide.

Storage

Store at -20 °C. Stable for 12 months from date of receipt

Anti-Amphiphysin 1 Antibody - Protein Information

Name AMPH

Synonyms AMPH1

Function

May participate in mechanisms of regulated exocytosis in synapses and certain endocrine cell types. May control the properties of the membrane associated cytoskeleton.

Cellular Location

Cytoplasmic vesicle, secretory vesicle, synaptic vesicle membrane; Peripheral membrane protein; Cytoplasmic side Cytoplasm, cytoskeleton

Tissue Location

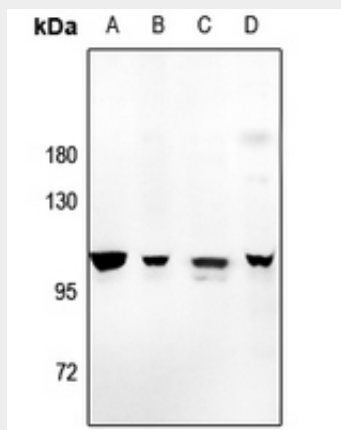
Neurons, certain endocrine cell types and spermatocytes

Anti-Amphiphysin 1 Antibody - Protocols

Provided below are standard protocols that you may find useful for product applications.

- [Western Blot](#)
- [Blocking Peptides](#)
- [Dot Blot](#)
- [Immunohistochemistry](#)
- [Immunofluorescence](#)
- [Immunoprecipitation](#)
- [Flow Cytometry](#)
- [Cell Culture](#)

Anti-Amphiphysin 1 Antibody - Images



Western blot analysis of Amphiphysin 1 expression in U87MG (A), Panc1 (B), SHSY5Y (C), BV2 (D) whole cell lysates.

Anti-Amphiphysin 1 Antibody - Background

KLH-conjugated synthetic peptide encompassing a sequence within the center region of human Amphiphysin 1. The exact sequence is proprietary.