

Anti-ALDH1A1 Antibody
Rabbit polyclonal antibody to ALDH1A1
Catalog # AP60215

Specification

Anti-ALDH1A1 Antibody - Product Information

Application	WB
Primary Accession	P00352
Other Accession	P24549
Reactivity	Human, Mouse, Rat
Host	Rabbit
Clonality	Polyclonal
Calculated MW	54862

Anti-ALDH1A1 Antibody - Additional Information

Gene ID 216

Other Names

ALDC; ALDH1; PUMB1; Retinal dehydrogenase 1; RALDH 1; RaLDH1; ALDH-E1; ALHDII; Aldehyde dehydrogenase family 1 member A1; Aldehyde dehydrogenase, cytosolic

Target/Specificity

Recognizes endogenous levels of ALDH1A1 protein.

Dilution

WB~~WB (1/500 - 1/1000)

Format

Liquid in 0.42% Potassium phosphate, 0.87% Sodium chloride, pH 7.3, 30% glycerol, and 0.09% (W/V) sodium azide.

Storage

Store at -20 °C. Stable for 12 months from date of receipt

Anti-ALDH1A1 Antibody - Protein Information

Name ALDH1A1 ([HGNC:402](#))

Function

Cytosolic dehydrogenase that catalyzes the irreversible oxidation of a wide range of aldehydes to their corresponding carboxylic acid (PubMed: 12941160, PubMed: 15623782, PubMed: 17175089, PubMed: 19296407, PubMed: 25450233, PubMed: 26373694). Functions downstream of retinol dehydrogenases and catalyzes

the oxidation of retinaldehyde into retinoic acid, the second step in the oxidation of retinol/vitamin A into retinoic acid (By similarity). This pathway is crucial to control the levels of retinol and retinoic acid, two important molecules which excess can be teratogenic and cytotoxic (By similarity). Also oxidizes aldehydes resulting from lipid peroxidation like (E)-4-hydroxynon-2-enal/HNE, malonaldehyde and hexanal that form protein adducts and are highly cytotoxic. By participating for instance to the clearance of (E)-4-hydroxynon-2-enal/HNE in the lens epithelium prevents the formation of HNE-protein adducts and lens opacification (PubMed:12941160, PubMed:15623782, PubMed:19296407). Functions also downstream of fructosamine-3-kinase in the fructosamine degradation pathway by catalyzing the oxidation of 3-deoxyglucosone, the carbohydrate product of fructosamine 3-phosphate decomposition, which is itself a potent glycating agent that may react with lysine and arginine side-chains of proteins (PubMed:17175089). Has also an aminobutyraldehyde dehydrogenase activity and is probably part of an alternative pathway for the biosynthesis of GABA/4-aminobutanoate in midbrain, thereby playing a role in GABAergic synaptic transmission (By similarity).

Cellular Location

Cytoplasm, cytosol. Cell projection, axon {ECO:0000250|UniProtKB:P24549}

Tissue Location

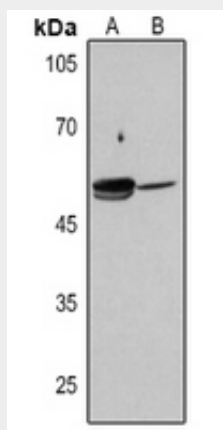
Expressed by erythrocytes (at protein level).

Anti-ALDH1A1 Antibody - Protocols

Provided below are standard protocols that you may find useful for product applications.

- [Western Blot](#)
- [Blocking Peptides](#)
- [Dot Blot](#)
- [Immunohistochemistry](#)
- [Immunofluorescence](#)
- [Immunoprecipitation](#)
- [Flow Cytometry](#)
- [Cell Culture](#)

Anti-ALDH1A1 Antibody - Images



Western blot analysis of ALDH1A1 expression in mouse liver (A), rat lung (B) whole cell lysates.

Anti-ALDH1A1 Antibody - Background

KLH-conjugated synthetic peptide encompassing a sequence within the N-term region of human ALDH1A1. The exact sequence is proprietary.