

**Anti-GFI1B Antibody**  
Rabbit polyclonal antibody to GFI1B  
Catalog # AP60208

**Specification**

---

**Anti-GFI1B Antibody - Product Information**

Application	WB
Primary Accession	<a href="#">Q5VTD9</a>
Reactivity	Human, Mouse, Rat
Host	Rabbit
Clonality	Polyclonal
Calculated MW	37492

**Anti-GFI1B Antibody - Additional Information**

**Gene ID** 8328

**Other Names**

Zinc finger protein Gfi-1b

**Target/Specificity**

Recognizes endogenous levels of GFI1B protein.

**Dilution**

WB~~WB (1/500 - 1/1000)

**Format**

Liquid in 0.42% Potassium phosphate, 0.87% Sodium chloride, pH 7.3, 30% glycerol, and 0.09% (W/V) sodium azide.

**Storage**

Store at -20 °C. Stable for 12 months from date of receipt

**Anti-GFI1B Antibody - Protein Information**

**Name** GFI1B

**Function**

Essential proto-oncogenic transcriptional regulator necessary for development and differentiation of erythroid and megakaryocytic lineages. Component of a RCOR-GFI-KDM1A-HDAC complex that suppresses, via histone deacetylase (HDAC) recruitment, a number of genes implicated in multilineage blood cell development and controls hematopoietic differentiation. Transcriptional repressor or activator depending on both promoter and cell type context; represses promoter activity of SOCS1 and SOCS3 and thus, may regulate cytokine signaling pathways. Cooperates with GATA1 to repress target gene transcription, such as the apoptosis regulator BCL2L1; GFI1B silencing in leukemic cell lines markedly increase apoptosis rate. Inhibits down-regulation of MYC and MYB as well as the cyclin-dependent kinase inhibitor CDKN1A/P21WAF1 in IL6-treated myelomonocytic cells. Represses expression of GATA3 in T-cell lymphomas and inhibits

GATA1-mediated transcription; as GATA1 also mediates erythroid GFI1B transcription, both GATA1 and GFI1B participate in a feedback regulatory pathway controlling the expression of GFI1B gene in erythroid cells. Suppresses GATA1-mediated stimulation of GFI1B promoter through protein interaction. Binds to gamma-satellite DNA and to its own promoter, auto-repressing its own expression. Alters histone methylation by recruiting histone methyltransferase to target genes promoters. Plays a role in heterochromatin formation.

#### Cellular Location

Nucleus.

#### Tissue Location

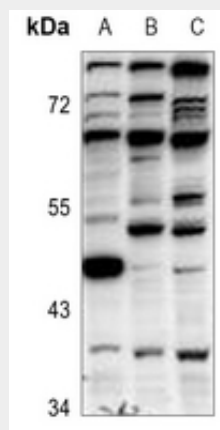
Expressed in bone marrow and fetal liver, but also detectable in fetal spleen, fetal thymus, and testes. Detected in hematopoietic stem cells, erythroblasts, and megakaryocytes Overexpressed in bone marrow of patients with erythroleukemia and megakaryocytic leukemia as well as in their corresponding leukemic cell lines, and markedly repressed in severe aplastic anemia (SAA)

#### Anti-GFI1B Antibody - Protocols

Provided below are standard protocols that you may find useful for product applications.

- [Western Blot](#)
- [Blocking Peptides](#)
- [Dot Blot](#)
- [Immunohistochemistry](#)
- [Immunofluorescence](#)
- [Immunoprecipitation](#)
- [Flow Cytometry](#)
- [Cell Culture](#)

#### Anti-GFI1B Antibody - Images



Western blot analysis of GFI1B expression in SHSY5Y (A), HCT116 (B), PC3 (C) whole cell lysates.

#### Anti-GFI1B Antibody - Background

KLH-conjugated synthetic peptide encompassing a sequence within the center region of human GFI1B. The exact sequence is proprietary.