

**Anti-SENTP6 Antibody**  
**Rabbit polyclonal antibody to SENTP6**  
**Catalog # AP60205****Specification**

---

**Anti-SENTP6 Antibody - Product Information**

Application	WB
Primary Accession	<a href="#">Q9GZR1</a>
Other Accession	<a href="#">Q6P7W0</a>
Reactivity	Human, Mouse, Rat
Host	Rabbit
Clonality	Polyclonal
Calculated MW	126146

**Anti-SENTP6 Antibody - Additional Information****Gene ID** 26054**Other Names**KIAA0797; SSP1; SUSP1; Sentrin-specific protease 6; SUMO-1-specific protease 1;  
Sentrin/SUMO-specific protease SENTP6**Target/Specificity**

Recognizes endogenous levels of SENTP6 protein.

**Dilution**

WB~~WB (1/500 - 1/1000), IH (1/100 - 1/200)

**Format**

Liquid in 0.42% Potassium phosphate, 0.87% Sodium chloride, pH 7.3, 30% glycerol, and 0.09% (W/V) sodium azide.

**Storage**

Store at -20 °C. Stable for 12 months from date of receipt

**Anti-SENTP6 Antibody - Protein Information****Name** SENTP6**Synonyms** KIAA0797, SSP1, SUSP1**Function**

Protease that deconjugates SUMO1, SUMO2 and SUMO3 from targeted proteins. Processes preferentially poly-SUMO2 and poly-SUMO3 chains, but does not efficiently process SUMO1, SUMO2 and SUMO3 precursors. Deconjugates SUMO1 from RXRA, leading to transcriptional activation. Involved in chromosome alignment and spindle assembly, by regulating the kinetochore CENPH-CENPI-CENPK complex. Desumoylates PML and CENPI, protecting them from degradation by the ubiquitin ligase RNF4, which targets polysumoylated proteins for proteasomal

degradation. Desumoylates also RPA1, thus preventing recruitment of RAD51 to the DNA damage foci to initiate DNA repair through homologous recombination.

**Cellular Location**

Nucleus

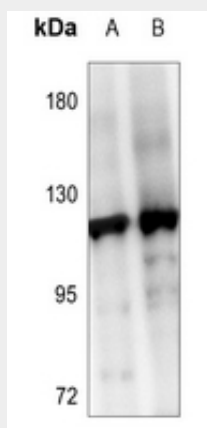
**Tissue Location**

Highly expressed in reproductive organs, such as testis, ovary and prostate

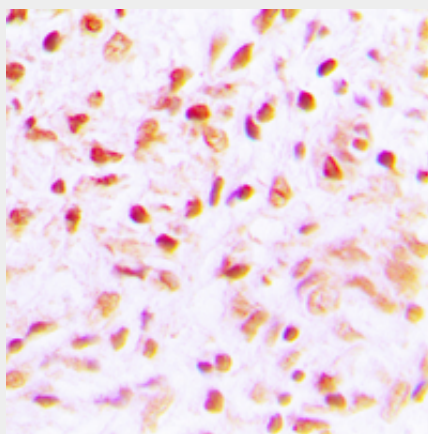
**Anti-SENP6 Antibody - Protocols**

Provided below are standard protocols that you may find useful for product applications.

- [Western Blot](#)
- [Blocking Peptides](#)
- [Dot Blot](#)
- [Immunohistochemistry](#)
- [Immunofluorescence](#)
- [Immunoprecipitation](#)
- [Flow Cytometry](#)
- [Cell Culture](#)

**Anti-SENP6 Antibody - Images**

Western blot analysis of SENP6 expression in A2780 (A), HEK293T (B) whole cell lysates.



Immunohistochemical analysis of SENP6 staining in human lung cancer formalin fixed paraffin embedded tissue section. The section was pre-treated using heat mediated antigen retrieval with sodium citrate buffer (pH 6.0). The section was then incubated with the antibody at room temperature and detected using an HRP conjugated compact polymer system. DAB was used as the chromogen. The section was then counterstained with haematoxylin and mounted with DPX.

**Anti-SENP6 Antibody - Background**

KLH-conjugated synthetic peptide encompassing a sequence within the C-term region of human SENP6. The exact sequence is proprietary.