

**Anti-REG4 Antibody**  
Rabbit polyclonal antibody to REG4  
Catalog # AP60204

**Specification**

---

**Anti-REG4 Antibody - Product Information**

Application	WB
Primary Accession	<a href="#">O9BYZ8</a>
Other Accession	<a href="#">O9D8G5</a>
Reactivity	Human, Mouse, Rat, Pig
Host	Rabbit
Clonality	Polyclonal
Calculated MW	18230

**Anti-REG4 Antibody - Additional Information**

**Gene ID** 83998

**Other Names**

GISP; RELP; Regenerating islet-derived protein 4; REG-4; Gastrointestinal secretory protein; REG-like protein; Regenerating islet-derived protein IV; Reg IV

**Target/Specificity**

Recognizes endogenous levels of REG4 protein.

**Dilution**

WB~~WB (1/500 - 1/1000), IH (1/100 - 1/200)

**Format**

Liquid in 0.42% Potassium phosphate, 0.87% Sodium chloride, pH 7.3, 30% glycerol, and 0.09% (W/V) sodium azide.

**Storage**

Store at -20 °C. Stable for 12 months from date of receipt

**Anti-REG4 Antibody - Protein Information**

**Name** REG4

**Synonyms** GISP, RELP

**Function**

Calcium-independent lectin displaying mannose-binding specificity and able to maintain carbohydrate recognition activity in an acidic environment. May be involved in inflammatory and metaplastic responses of the gastrointestinal epithelium.

**Cellular Location**

Secreted.

### Tissue Location

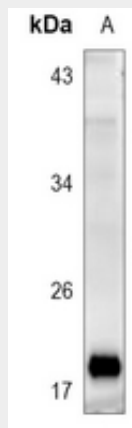
Highly expressed in the gastrointestinal tract including the duodenum, jejunum, ileum, ileocecum, appendix, descending colon, pancreas and small intestine. Weakly expressed in normal colon and stomach. Strongly expressed in most colorectal tumors than in normal colon. Preferentially expressed in mucinous tumors and in some cases neuro-endocrine tumors. Expressed in mucus-secreting cells and enterocyte-like cells. In small intestine expressed at the basal perinuclear zone of goblet cells.

### Anti-REG4 Antibody - Protocols

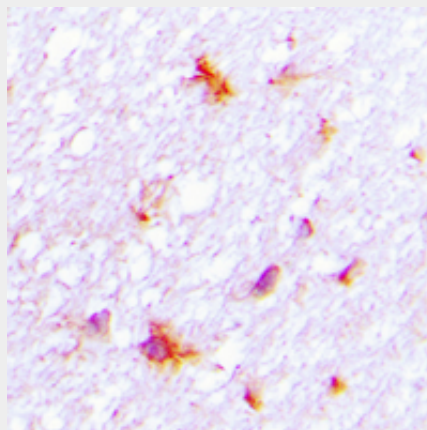
Provided below are standard protocols that you may find useful for product applications.

- [Western Blot](#)
- [Blocking Peptides](#)
- [Dot Blot](#)
- [Immunohistochemistry](#)
- [Immunofluorescence](#)
- [Immunoprecipitation](#)
- [Flow Cytometry](#)
- [Cell Culture](#)

### Anti-REG4 Antibody - Images



Western blot analysis of REG4 expression in mouse pancreas (A) whole cell lysates.



Immunohistochemical analysis of REG4 staining in human brain formalin fixed paraffin embedded

tissue section. The section was pre-treated using heat mediated antigen retrieval with sodium citrate buffer (pH 6.0). The section was then incubated with the antibody at room temperature and detected using an HRP conjugated compact polymer system. DAB was used as the chromogen. The section was then counterstained with haematoxylin and mounted with DPX.

#### **Anti-REG4 Antibody - Background**

KLH-conjugated synthetic peptide encompassing a sequence within the center region of human REG4. The exact sequence is proprietary.