

**Anti-PPP1R13B Antibody**  
Rabbit polyclonal antibody to PPP1R13B  
Catalog # AP60202

**Specification**

---

**Anti-PPP1R13B Antibody - Product Information**

Application	<b>WB</b>
Primary Accession	<a href="#">O96KQ4</a>
Other Accession	<a href="#">O62415</a>
Reactivity	<b>Human, Mouse, Rat</b>
Host	<b>Rabbit</b>
Clonality	<b>Polyclonal</b>
Calculated MW	<b>119565</b>

**Anti-PPP1R13B Antibody - Additional Information**

**Gene ID** 23368

**Other Names**

ASPP1; KIAA0771; Apoptosis-stimulating of p53 protein 1; Protein phosphatase 1 regulatory subunit 13B

**Target/Specificity**

Recognizes endogenous levels of PPP1R13B protein.

**Dilution**

WB~~WB (1/500 - 1/1000)

**Format**

Liquid in 0.42% Potassium phosphate, 0.87% Sodium chloride, pH 7.3, 30% glycerol, and 0.09% (W/V) sodium azide.

**Storage**

Store at -20 °C. Stable for 12 months from date of receipt

**Anti-PPP1R13B Antibody - Protein Information**

**Name** PPP1R13B

**Synonyms** ASPP1, KIAA0771

**Function**

Regulator that plays a central role in regulation of apoptosis via its interaction with p53/TP53 (PubMed: [11684014](http://www.uniprot.org/citations/11684014)), PubMed: [12524540](http://www.uniprot.org/citations/12524540)). Regulates TP53 by enhancing the DNA binding and transactivation function of TP53 on the promoters of proapoptotic genes in vivo.

**Cellular Location**

Cytoplasm. Nucleus. Note=Predominantly cytoplasmic. Some fraction is nuclear

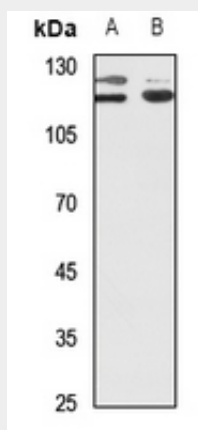
**Tissue Location**

Reduced expression in breast carcinomas expressing a wild-type TP53 protein.

**Anti-PPP1R13B Antibody - Protocols**

Provided below are standard protocols that you may find useful for product applications.

- [Western Blot](#)
- [Blocking Peptides](#)
- [Dot Blot](#)
- [Immunohistochemistry](#)
- [Immunofluorescence](#)
- [Immunoprecipitation](#)
- [Flow Cytometry](#)
- [Cell Culture](#)

**Anti-PPP1R13B Antibody - Images**

Western blot analysis of PPP1R13B expression in mouse testis (A), rat testis (B) whole cell lysates.

**Anti-PPP1R13B Antibody - Background**

KLH-conjugated synthetic peptide encompassing a sequence within the center region of human PPP1R13B. The exact sequence is proprietary.