

Anti-PICK1 Antibody
Rabbit polyclonal antibody to PICK1
Catalog # AP60199**Specification**

Anti-PICK1 Antibody - Product Information

Application	WB
Primary Accession	O9NRD5
Other Accession	Q62083
Reactivity	Human, Mouse, Rat, Monkey, Bovine
Host	Rabbit
Clonality	Polyclonal
Calculated MW	46600

Anti-PICK1 Antibody - Additional Information**Gene ID** 9463**Other Names**

PRKCABP; PRKCA-binding protein; Protein interacting with C kinase 1; Protein kinase C-alpha-binding protein

Target/Specificity

Recognizes endogenous levels of PICK1 protein.

Dilution

WB~~WB (1/500 - 1/1000)

Format

Liquid in 0.42% Potassium phosphate, 0.87% Sodium chloride, pH 7.3, 30% glycerol, and 0.09% (W/V) sodium azide.

Storage

Store at -20 °C. Stable for 12 months from date of receipt

Anti-PICK1 Antibody - Protein Information**Name** PICK1**Synonyms** PRKCABP**Function**

Probable adapter protein that bind to and organize the subcellular localization of a variety of membrane proteins containing some PDZ recognition sequence. Involved in the clustering of various receptors, possibly by acting at the receptor internalization level. Plays a role in synaptic plasticity by regulating the trafficking and internalization of AMPA receptors. May be regulated upon PRKCA activation. May regulate ASIC1/ASIC3 channel. Regulates actin polymerization by inhibiting the actin-nucleating activity of the Arp2/3 complex; the function is competitive with

nucleation promoting factors and is linked to neuronal morphology regulation and AMPA receptor (AMPA) endocytosis. Via interaction with the Arp2/3 complex involved in regulation of synaptic plasticity of excitatory synapses and required for spine shrinkage during long-term depression (LTD). Involved in regulation of astrocyte morphology, antagonistic to Arp2/3 complex activator WASL/N-WASP function.

Cellular Location

Cytoplasm, perinuclear region. Membrane; Peripheral membrane protein. Membrane; Lipid-anchor. Postsynaptic density. Synapse, synaptosome. Cytoplasm, cytoskeleton. Note=Also membrane-associated, present at excitatory synapses.

Tissue Location

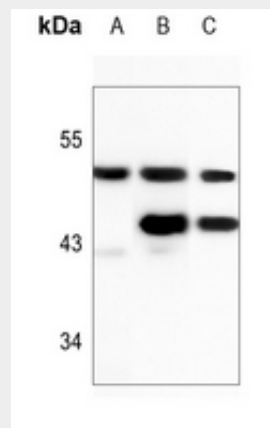
Ubiquitous.

Anti-PICK1 Antibody - Protocols

Provided below are standard protocols that you may find useful for product applications.

- [Western Blot](#)
- [Blocking Peptides](#)
- [Dot Blot](#)
- [Immunohistochemistry](#)
- [Immunofluorescence](#)
- [Immunoprecipitation](#)
- [Flow Cytometry](#)
- [Cell Culture](#)

Anti-PICK1 Antibody - Images



Western blot analysis of PICK1 expression in Hela (A), mouse brain (B), rat brain (C) whole cell lysates.

Anti-PICK1 Antibody - Background

KLH-conjugated synthetic peptide encompassing a sequence within the C-term region of human PICK1. The exact sequence is proprietary.