

Anti-NDUFB7 Antibody
Rabbit polyclonal antibody to NDUFB7
Catalog # AP60193

Specification

Anti-NDUFB7 Antibody - Product Information

Application	WB
Primary Accession	P17568
Other Accession	Q9CR61
Reactivity	Human, Mouse, Rat
Host	Rabbit
Clonality	Polyclonal
Calculated MW	16402

Anti-NDUFB7 Antibody - Additional Information

Gene ID 4713

Other Names

NADH dehydrogenase [ubiquinone] 1 beta subcomplex subunit 7; Cell adhesion protein SQM1; Complex I-B18; CI-B18; NADH-ubiquinone oxidoreductase B18 subunit

Target/Specificity

Recognizes endogenous levels of NDUFB7 protein.

Dilution

WB~~WB (1/500 - 1/1000)

Format

Liquid in 0.42% Potassium phosphate, 0.87% Sodium chloride, pH 7.3, 30% glycerol, and 0.09% (W/V) sodium azide.

Storage

Store at -20 °C. Stable for 12 months from date of receipt

Anti-NDUFB7 Antibody - Protein Information

Name NDUFB7

Function

Accessory subunit of the mitochondrial membrane respiratory chain NADH dehydrogenase (Complex I), that is believed not to be involved in catalysis. Complex I functions in the transfer of electrons from NADH to the respiratory chain. The immediate electron acceptor for the enzyme is believed to be ubiquinone.

Cellular Location

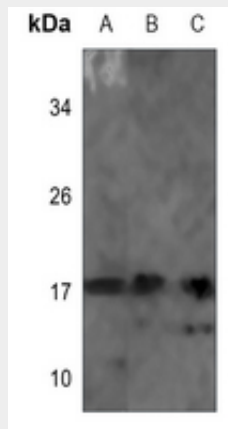
Mitochondrion inner membrane; Peripheral membrane protein. Mitochondrion intermembrane space

Anti-NDUFB7 Antibody - Protocols

Provided below are standard protocols that you may find useful for product applications.

- [Western Blot](#)
- [Blocking Peptides](#)
- [Dot Blot](#)
- [Immunohistochemistry](#)
- [Immunofluorescence](#)
- [Immunoprecipitation](#)
- [Flow Cytometry](#)
- [Cell Culture](#)

Anti-NDUFB7 Antibody - Images



Western blot analysis of NDUFB7 expression in HEK293T (A), mouse liver (B), rat heart (C) whole cell lysates.

Anti-NDUFB7 Antibody - Background

KLH-conjugated synthetic peptide encompassing a sequence within the center region of human NDUFB7. The exact sequence is proprietary.