

**Anti-MMP26 Antibody**  
**Rabbit polyclonal antibody to MMP26**  
**Catalog # AP60192****Specification**

---

**Anti-MMP26 Antibody - Product Information**

Application	<b>WB</b>
Primary Accession	<a href="#">O9NRE1</a>
Reactivity	<b>Human, Mouse, Rat, Monkey</b>
Host	<b>Rabbit</b>
Clonality	<b>Polyclonal</b>
Calculated MW	<b>29708</b>

**Anti-MMP26 Antibody - Additional Information****Gene ID** 56547**Other Names**

Matrix metalloproteinase-26; MMP-26; Endometase; Matrilysin-2

**Target/Specificity**

Recognizes endogenous levels of MMP26 protein.

**Dilution**

WB~~WB (1/500 - 1/1000)

**Format**

Liquid in 0.42% Potassium phosphate, 0.87% Sodium chloride, pH 7.3, 30% glycerol, and 0.09% (W/V) sodium azide.

**Storage**

Store at -20 °C. Stable for 12 months from date of receipt

**Anti-MMP26 Antibody - Protein Information****Name** MMP26**Function**

May hydrolyze collagen type IV, fibronectin, fibrinogen, beta-casein, type I gelatin and alpha-1 proteinase inhibitor. Is also able to activate progelatinase B.

**Cellular Location**

Secreted, extracellular space, extracellular matrix

**Tissue Location**

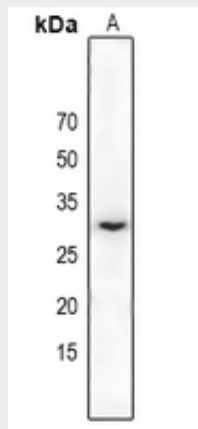
Expressed specifically in uterus and placenta. Is also widely expressed in malignant tumors from different sources as well as in diverse tumor cell lines

## Anti-MMP26 Antibody - Protocols

Provided below are standard protocols that you may find useful for product applications.

- [Western Blot](#)
- [Blocking Peptides](#)
- [Dot Blot](#)
- [Immunohistochemistry](#)
- [Immunofluorescence](#)
- [Immunoprecipitation](#)
- [Flow Cytometry](#)
- [Cell Culture](#)

## Anti-MMP26 Antibody - Images



Western blot analysis of MMP26 expression in rat kidney (A) whole cell lysates.

## Anti-MMP26 Antibody - Background

KLH-conjugated synthetic peptide encompassing a sequence within the center region of human MMP26. The exact sequence is proprietary.