

**Anti-mGLUR1 Antibody**  
**Rabbit polyclonal antibody to mGLUR1**  
**Catalog # AP60191****Specification**

---

**Anti-mGLUR1 Antibody - Product Information**

Application	<b>WB</b>
Primary Accession	<a href="#">O13255</a>
Other Accession	<a href="#">P97772</a>
Reactivity	<b>Human, Mouse, Rat</b>
Host	<b>Rabbit</b>
Clonality	<b>Polyclonal</b>
Calculated MW	<b>132357</b>

**Anti-mGLUR1 Antibody - Additional Information****Gene ID** 2911**Other Names**

GPRC1A; MGLUR1; Metabotropic glutamate receptor 1; mGluR1

**Target/Specificity**

Recognizes endogenous levels of mGLUR1 protein.

**Dilution**

WB~~WB (1/500 - 1/1000)

**Format**

Liquid in 0.42% Potassium phosphate, 0.87% Sodium chloride, pH 7.3, 30% glycerol, and 0.09% (W/V) sodium azide.

**Storage**

Store at -20 °C. Stable for 12 months from date of receipt

**Anti-mGLUR1 Antibody - Protein Information****Name** GRM1**Synonyms** GPRC1A, MGLUR1**Function**

G-protein coupled receptor for glutamate. Ligand binding causes a conformation change that triggers signaling via guanine nucleotide-binding proteins (G proteins) and modulates the activity of down-stream effectors. Signaling activates a phosphatidylinositol- calcium second messenger system. May participate in the central action of glutamate in the CNS, such as long-term potentiation in the hippocampus and long-term depression in the cerebellum (PubMed:<a href="http://www.uniprot.org/citations/24603153" target="\_blank">24603153</a>, PubMed:<a href="http://www.uniprot.org/citations/28886343" target="\_blank">28886343</a>, PubMed:<a href="http://www.uniprot.org/citations/28886343" target="\_blank">28886343</a>, PubMed:<a href="http://www.uniprot.org/citations/28886343" target="\_blank">28886343</a>).

[7476890](http://www.uniprot.org/citations/7476890)). May function in the light response in the retina (By similarity). Induces GRID1 and GRID2 cation-channel activation via GNAQ-PLC-PKC pathway in dopaminergic neurons and cerebellar Purkinje cell, respectively (PubMed: [24357660](http://www.uniprot.org/citations/24357660), PubMed: [27276689](http://www.uniprot.org/citations/27276689)).

#### Cellular Location

Cell membrane; Multi-pass membrane protein. Postsynaptic cell membrane; Multi-pass membrane protein

#### Tissue Location

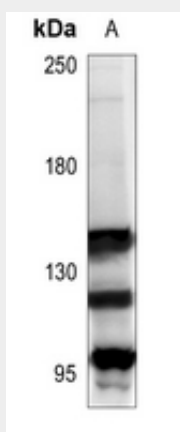
Detected in brain..

### Anti-mGLUR1 Antibody - Protocols

Provided below are standard protocols that you may find useful for product applications.

- [Western Blot](#)
- [Blocking Peptides](#)
- [Dot Blot](#)
- [Immunohistochemistry](#)
- [Immunofluorescence](#)
- [Immunoprecipitation](#)
- [Flow Cytometry](#)
- [Cell Culture](#)

### Anti-mGLUR1 Antibody - Images



Western blot analysis of mGLUR1 expression in HeLa (A) whole cell lysates.

### Anti-mGLUR1 Antibody - Background

KLH-conjugated synthetic peptide encompassing a sequence within the center region of human mGLUR1. The exact sequence is proprietary.