

Anti-Kallikrein 4 Antibody
Rabbit polyclonal antibody to Kallikrein 4
Catalog # AP60185

Specification

Anti-Kallikrein 4 Antibody - Product Information

Application	WB
Primary Accession	O9Y5K2
Reactivity	Human, Mouse, Rat
Host	Rabbit
Clonality	Polyclonal
Calculated MW	27032

Anti-Kallikrein 4 Antibody - Additional Information

Gene ID 9622

Other Names

EMSP1; PRSS17; PSTS; Kallikrein-4; Enamel matrix serine proteinase 1; Kallikrein-like protein 1; KLK-L1; Prostase; Serine protease 17

Target/Specificity

Recognizes endogenous levels of Kallikrein 4 protein.

Dilution

WB~~WB (1/500 - 1/1000)

Format

Liquid in 0.42% Potassium phosphate, 0.87% Sodium chloride, pH 7.3, 30% glycerol, and 0.09% (W/V) sodium azide.

Storage

Store at -20 °C. Stable for 12 months from date of receipt

Anti-Kallikrein 4 Antibody - Protein Information

Name KLK4

Synonyms EMSP1, PRSS17, PSTS

Function

Has a major role in enamel formation (PubMed:15235027). Required during the maturation stage of tooth development for clearance of enamel proteins and normal structural patterning of the crystalline matrix (By similarity).

Cellular Location

Secreted.

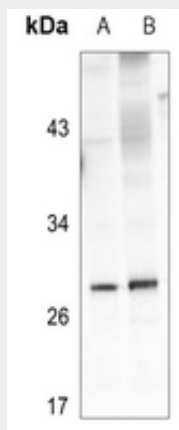
Tissue Location

Expressed in prostate.

Anti-Kallikrein 4 Antibody - Protocols

Provided below are standard protocols that you may find useful for product applications.

- [Western Blot](#)
- [Blocking Peptides](#)
- [Dot Blot](#)
- [Immunohistochemistry](#)
- [Immunofluorescence](#)
- [Immunoprecipitation](#)
- [Flow Cytometry](#)
- [Cell Culture](#)

Anti-Kallikrein 4 Antibody - Images

Western blot analysis of Kallikrein 4 expression in HEK293T (A), CT26 (B) whole cell lysates.

Anti-Kallikrein 4 Antibody - Background

KLH-conjugated synthetic peptide encompassing a sequence within the N-term region of human Kallikrein 4. The exact sequence is proprietary.