

Anti-IRF5 Antibody
Rabbit polyclonal antibody to IRF5
Catalog # AP60182**Specification**

Anti-IRF5 Antibody - Product Information

Application	WB
Primary Accession	O13568
Other Accession	P56477
Reactivity	Human, Mouse, Rat, Pig, Bovine
Host	Rabbit
Clonality	Polyclonal
Calculated MW	56044

Anti-IRF5 Antibody - Additional Information**Gene ID** 3663**Other Names**

Interferon regulatory factor 5; IRF-5

Target/Specificity

Recognizes endogenous levels of IRF5 protein.

Dilution

WB~~WB (1/500 - 1/1000)

Format

Liquid in 0.42% Potassium phosphate, 0.87% Sodium chloride, pH 7.3, 30% glycerol, and 0.09% (W/V) sodium azide.

Storage

Store at -20 °C. Stable for 12 months from date of receipt

Anti-IRF5 Antibody - Protein Information**Name** IRF5 {ECO:0000303|PubMed:11303025, ECO:0000312|HGNC:HGNC:6120}**Function**

Transcription factor that plays a critical role in innate immunity by activating expression of type I interferon (IFN) IFNA and INFB and inflammatory cytokines downstream of endolysosomal toll-like receptors TLR7, TLR8 and TLR9 (PubMed: [11303025](http://www.uniprot.org/citations/11303025) target="_blank">11303025, PubMed: [15695821](http://www.uniprot.org/citations/15695821) target="_blank">15695821, PubMed: [22412986](http://www.uniprot.org/citations/22412986) target="_blank">22412986, PubMed: [25326418](http://www.uniprot.org/citations/25326418) target="_blank">25326418, PubMed: [32433612](http://www.uniprot.org/citations/32433612) target="_blank">32433612). Regulates the transcription of type I IFN genes (IFN-alpha and IFN-beta) and IFN- stimulated genes (ISG) by binding to an interferon-stimulated response element

(ISRE) in their promoters (By similarity). Can efficiently activate both the IFN-beta (IFNB) and the IFN-alpha (IFNA) genes and mediate their induction downstream of the TLR-activated, MyD88-dependent pathway (By similarity). Key transcription factor regulating the IFN response during SARS-CoV-2 infection (PubMed:33440148).

Cellular Location

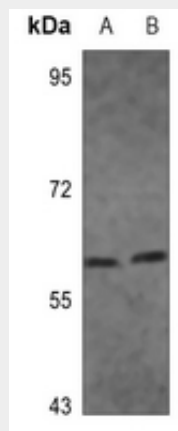
Cytoplasm. Nucleus. Note=Shuttles between the nucleus and the cytoplasm: upon activation by the TLR adapter MYD88 and subsequent phosphorylation, translocates to the nucleus

Anti-IRF5 Antibody - Protocols

Provided below are standard protocols that you may find useful for product applications.

- [Western Blot](#)
- [Blocking Peptides](#)
- [Dot Blot](#)
- [Immunohistochemistry](#)
- [Immunofluorescence](#)
- [Immunoprecipitation](#)
- [Flow Cytometry](#)
- [Cell Culture](#)

Anti-IRF5 Antibody - Images



Western blot analysis of IRF5 expression in SP20 (A), HepG2 (B), HEK293T (C), A549 (D) whole cell lysates.

Anti-IRF5 Antibody - Background

KLH-conjugated synthetic peptide encompassing a sequence within the center region of human IRF5. The exact sequence is proprietary.