

Anti-GPR143 Antibody
Rabbit polyclonal antibody to GPR143
Catalog # AP60176

Specification

Anti-GPR143 Antibody - Product Information

| | |
|-------------------|------------------------|
| Application | WB |
| Primary Accession | P51810 |
| Other Accession | P70259 |
| Reactivity | Human, Mouse, Rat |
| Host | Rabbit |
| Clonality | Polyclonal |
| Calculated MW | 43878 |

Anti-GPR143 Antibody - Additional Information

Gene ID 4935

Other Names

OA1; G-protein coupled receptor 143; Ocular albinism type 1 protein

Target/Specificity

Recognizes endogenous levels of GPR143 protein.

Dilution

WB~~WB (1/500 - 1/1000)

Format

Liquid in 0.42% Potassium phosphate, 0.87% Sodium chloride, pH 7.3, 30% glycerol, and 0.09% (W/V) sodium azide.

Storage

Store at -20 °C. Stable for 12 months from date of receipt

Anti-GPR143 Antibody - Protein Information

Name GPR143

Synonyms OA1

Function

Receptor for tyrosine, L-DOPA and dopamine. After binding to L-DOPA, stimulates Ca(2+) influx into the cytoplasm, increases secretion of the neurotrophic factor SERPINF1 and relocalizes beta arrestin at the plasma membrane; this ligand-dependent signaling occurs through a G(q)-mediated pathway in melanocytic cells. Its activity is mediated by G proteins which activate the phosphoinositide signaling pathway. Also plays a role as an intracellular G protein-coupled receptor involved in melanosome biogenesis, organization and transport.

Cellular Location

Melanosome membrane; Multi-pass membrane protein. Lysosome membrane; Multi-pass membrane protein. Apical cell membrane; Multi-pass membrane protein. Note=Distributed throughout the endo-melanosomal system but most of endogenous protein is localized in unpigmented stage II melanosomes. Its expression on the apical cell membrane is sensitive to tyrosine (PubMed:18828673).

Tissue Location

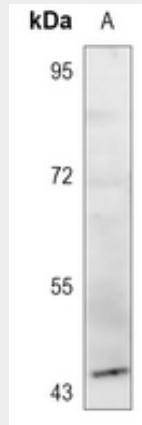
Expressed at high levels in the retina, including the retinal pigment epithelium (RPE), and in melanocytes. Weak expression is observed in brain and adrenal gland

Anti-GPR143 Antibody - Protocols

Provided below are standard protocols that you may find useful for product applications.

- [Western Blot](#)
- [Blocking Peptides](#)
- [Dot Blot](#)
- [Immunohistochemistry](#)
- [Immunofluorescence](#)
- [Immunoprecipitation](#)
- [Flow Cytometry](#)
- [Cell Culture](#)

Anti-GPR143 Antibody - Images



Western blot analysis of GPR143 expression in PC12 (A) whole cell lysates.

Anti-GPR143 Antibody - Background

KLH-conjugated synthetic peptide encompassing a sequence within the center region of human GPR143. The exact sequence is proprietary.