

**Anti-GPR116 Antibody**  
Rabbit polyclonal antibody to GPR116  
Catalog # AP60174

### Specification

---

#### Anti-GPR116 Antibody - Product Information

Application	WB, IF
Primary Accession	<a href="#">Q8IZF2</a>
Reactivity	Human, Mouse, Rat
Host	Rabbit
Clonality	Polyclonal
Calculated MW	149457

#### Anti-GPR116 Antibody - Additional Information

Gene ID 221395

#### Other Names

KIAA0758; Probable G-protein coupled receptor 116

#### Target/Specificity

Recognizes endogenous levels of GPR116 protein.

#### Dilution

WB~~WB (1/500 - 1/1000), IH (1/100 - 1/200), IF/IC (1/100 - 1/500)  
IF~~WB (1/500 - 1/1000), IH (1/100 - 1/200), IF/IC (1/100 - 1/500)

#### Format

Liquid in 0.42% Potassium phosphate, 0.87% Sodium chloride, pH 7.3, 30% glycerol, and 0.09% (W/V) sodium azide.

#### Storage

Store at -20 °C. Stable for 12 months from date of receipt

#### Anti-GPR116 Antibody - Protein Information

Name ADGRF5 ([HGNC:19030](#))

Synonyms GPR116, KIAA0758

#### Function

Receptor that plays a critical role in lung surfactant homeostasis. May play a role in controlling adipocyte function.

#### Cellular Location

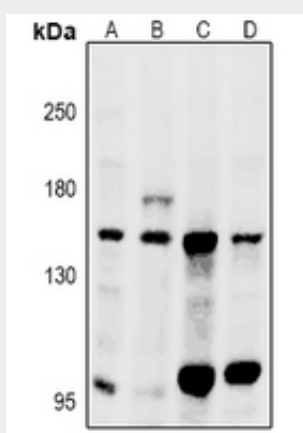
Cell membrane {ECO:0000250|UniProtKB:Q9WVT0}; Multi-pass membrane protein

## Anti-GPR116 Antibody - Protocols

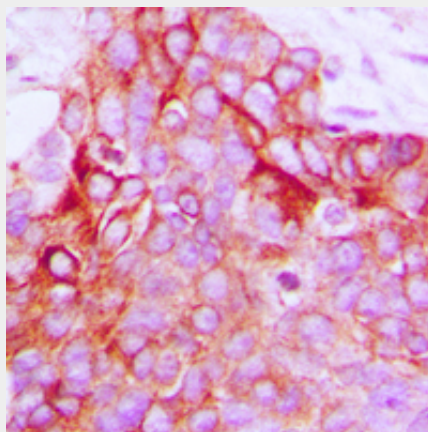
Provided below are standard protocols that you may find useful for product applications.

- [Western Blot](#)
- [Blocking Peptides](#)
- [Dot Blot](#)
- [Immunohistochemistry](#)
- [Immunofluorescence](#)
- [Immunoprecipitation](#)
- [Flow Cytometry](#)
- [Cell Culture](#)

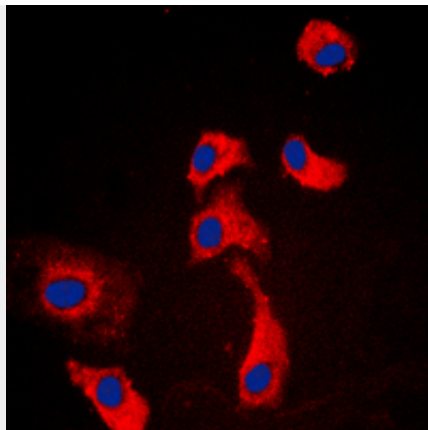
## Anti-GPR116 Antibody - Images



Western blot analysis of GPR116 expression in 3T3L1 (A), PC12 (B), HEK293T (C), A549 (D) whole cell lysates.



Immunohistochemical analysis of GPR116 staining in human breast cancer formalin fixed paraffin embedded tissue section. The section was pre-treated using heat mediated antigen retrieval with sodium citrate buffer (pH 6.0). The section was then incubated with the antibody at room temperature and detected using an HRP conjugated compact polymer system. DAB was used as the chromogen. The section was then counterstained with haematoxylin and mounted with DPX.



Immunofluorescent analysis of GPR116 staining in HEK293T cells. Formalin-fixed cells were permeabilized with 0.1% Triton X-100 in TBS for 5-10 minutes and blocked with 3% BSA-PBS for 30 minutes at room temperature. Cells were probed with the primary antibody in 3% BSA-PBS and incubated overnight at 4 °C in a humidified chamber. Cells were washed with PBST and incubated with a DyLight 594-conjugated secondary antibody (red) in PBS at room temperature in the dark. DAPI was used to stain the cell nuclei (blue).

#### **Anti-GPR116 Antibody - Background**

KLH-conjugated synthetic peptide encompassing a sequence within the C-term region of human GPR116. The exact sequence is proprietary.