

Anti-GCP2 Antibody
Rabbit polyclonal antibody to GCP2
Catalog # AP60173**Specification**

Anti-GCP2 Antibody - Product Information

Application	WB
Primary Accession	O9BSJ2
Other Accession	O921G8
Reactivity	Human, Mouse, Rat
Host	Rabbit
Clonality	Polyclonal
Calculated MW	102534

Anti-GCP2 Antibody - Additional Information**Gene ID** 10844**Other Names**

GCP2; Gamma-tubulin complex component 2; GCP-2; hGCP2; Gamma-ring complex protein 103 kDa; h103p; hGrip103; Spindle pole body protein Spc97 homolog; hSpc97

Target/Specificity

Recognizes endogenous levels of GCP2 protein.

Dilution

WB~~WB (1/500 - 1/1000)

Format

Liquid in 0.42% Potassium phosphate, 0.87% Sodium chloride, pH 7.3, 30% glycerol, and 0.09% (W/V) sodium azide.

Storage

Store at -20 °C. Stable for 12 months from date of receipt

Anti-GCP2 Antibody - Protein Information**Name** TUBGCP2**Synonyms** GCP2**Function**

Gamma-tubulin complex is necessary for microtubule nucleation at the centrosome. Plays a role in neuronal migration.

Cellular Location

Cytoplasm, cytoskeleton, microtubule organizing center, centrosome

Tissue Location

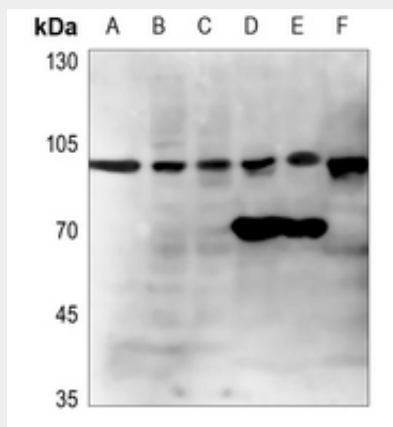
Ubiquitously expressed.

Anti-GCP2 Antibody - Protocols

Provided below are standard protocols that you may find useful for product applications.

- [Western Blot](#)
- [Blocking Peptides](#)
- [Dot Blot](#)
- [Immunohistochemistry](#)
- [Immunofluorescence](#)
- [Immunoprecipitation](#)
- [Flow Cytometry](#)
- [Cell Culture](#)

Anti-GCP2 Antibody - Images



Western blot analysis of GCP2 expression in HEK293T (A), A549 (B), H446 (C), mouse liver (D), mouse kidney (E), rat liver (F) whole cell lysates.

Anti-GCP2 Antibody - Background

KLH-conjugated synthetic peptide encompassing a sequence within the center region of human GCP2. The exact sequence is proprietary.