

Anti-GALR1 Antibody
Rabbit polyclonal antibody to GALR1
Catalog # AP60172

Specification

Anti-GALR1 Antibody - Product Information

Application	WB
Primary Accession	P47211
Other Accession	P56479
Reactivity	Human, Mouse, Rat
Host	Rabbit
Clonality	Polyclonal
Calculated MW	38953

Anti-GALR1 Antibody - Additional Information

Gene ID 2587

Other Names

GALNR; GALNR1; Galanin receptor type 1; GAL1-R; GALR-1

Target/Specificity

Recognizes endogenous levels of GALR1 protein.

Dilution

WB~~WB (1/500 - 1/1000)

Format

Liquid in 0.42% Potassium phosphate, 0.87% Sodium chloride, pH 7.3, 30% glycerol, and 0.09% (W/V) sodium azide.

Storage

Store at -20 °C. Stable for 12 months from date of receipt

Anti-GALR1 Antibody - Protein Information

Name GALR1

Synonyms GALNR, GALNR1

Function

Receptor for the hormone galanin. The activity of this receptor is mediated by G proteins that inhibit adenylate cyclase activity.

Cellular Location

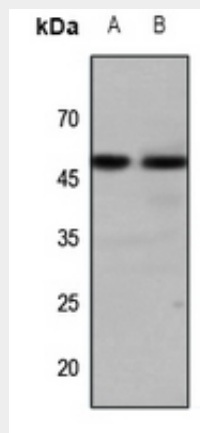
Cell membrane; Multi-pass membrane protein

Anti-GALR1 Antibody - Protocols

Provided below are standard protocols that you may find useful for product applications.

- [Western Blot](#)
- [Blocking Peptides](#)
- [Dot Blot](#)
- [Immunohistochemistry](#)
- [Immunofluorescence](#)
- [Immunoprecipitation](#)
- [Flow Cytometry](#)
- [Cell Culture](#)

Anti-GALR1 Antibody - Images



Western blot analysis of GALR1 expression in Hela (A), mouse brain (B) whole cell lysates.

Anti-GALR1 Antibody - Background

KLH-conjugated synthetic peptide encompassing a sequence within the center region of human GALR1. The exact sequence is proprietary.