

**Anti-FoxD4L5 Antibody**  
**Rabbit polyclonal antibody to FoxD4L5**  
**Catalog # AP60170**

**Specification**

---

**Anti-FoxD4L5 Antibody - Product Information**

Application	WB
Primary Accession	<a href="#">Q5VV16</a>
Reactivity	Human, Mouse, Rat
Host	Rabbit
Clonality	Polyclonal
Calculated MW	45780

**Anti-FoxD4L5 Antibody - Additional Information**

**Gene ID** 653427

**Other Names**

Forkhead box protein D4-like 5; FOXD4-like 5

**Target/Specificity**

Recognizes endogenous levels of FoxD4L5 protein.

**Dilution**

WB~~WB (1/500 - 1/1000)

**Format**

Liquid in 0.42% Potassium phosphate, 0.87% Sodium chloride, pH 7.3, 30% glycerol, and 0.09% (W/V) sodium azide.

**Storage**

Store at -20 °C. Stable for 12 months from date of receipt

**Anti-FoxD4L5 Antibody - Protein Information**

**Name** FOXD4L5

**Cellular Location**

Nucleus {ECO:0000255|PROSITE-ProRule:PRU00089}.

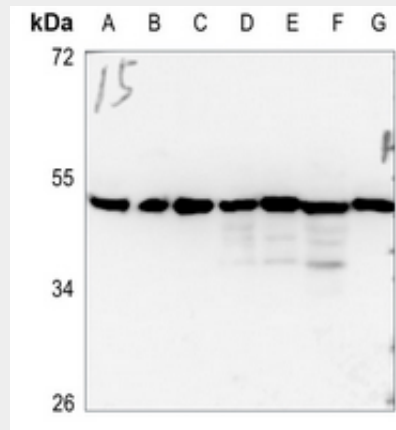
**Anti-FoxD4L5 Antibody - Protocols**

Provided below are standard protocols that you may find useful for product applications.

- [Western Blot](#)
- [Blocking Peptides](#)

- [Dot Blot](#)
- [Immunohistochemistry](#)
- [Immunofluorescence](#)
- [Immunoprecipitation](#)
- [Flow Cytometry](#)
- [Cell Culture](#)

#### Anti-FoxD4L5 Antibody - Images



Western blot analysis of FoxD4L5 expression in HEK293T (A), H1688 (B), H1792 (C), mouse liver (D), mouse kidney (E), rat liver (F), rat kidney (G) whole cell lysates.

#### Anti-FoxD4L5 Antibody - Background

KLH-conjugated synthetic peptide encompassing a sequence within the center region of human FoxD4L5. The exact sequence is proprietary.