

**Anti-FILTRIN Antibody**  
Rabbit polyclonal antibody to FILTRIN  
Catalog # AP60169

**Specification**

---

**Anti-FILTRIN Antibody - Product Information**

Application	WB
Primary Accession	<a href="#">Q6UWL6</a>
Other Accession	<a href="#">Q7TSU7</a>
Reactivity	Human, Mouse, Rat
Host	Rabbit
Clonality	Polyclonal
Calculated MW	75093

**Anti-FILTRIN Antibody - Additional Information**

**Gene ID** 84063

**Other Names**

NEPH3; Kin of IRRE-like protein 2; Kin of irregular chiasm-like protein 2; Nephrin-like protein 3

**Target/Specificity**

Recognizes endogenous levels of FILTRIN protein.

**Dilution**

WB~~WB (1/500 - 1/1000)

**Format**

Liquid in 0.42% Potassium phosphate, 0.87% Sodium chloride, pH 7.3, 30% glycerol, and 0.09% (W/V) sodium azide.

**Storage**

Store at -20 °C. Stable for 12 months from date of receipt

**Anti-FILTRIN Antibody - Protein Information**

**Name** KIRREL2

**Synonyms** NEPH3

**Function**

May regulate basal insulin secretion.

**Cellular Location**

Cell membrane {ECO:0000250|UniProtKB:Q7TSU7}; Single-pass type I membrane protein.

Note=Localized along the sites of the cell contacts. Colocalizes with E-Cadherin and beta- catenin. {ECO:0000250|UniProtKB:Q7TSU7}

### Tissue Location

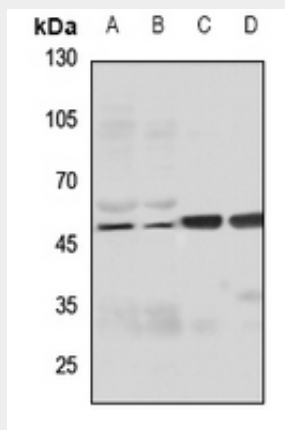
Highly expressed in beta-cells of the pancreatic islets.

### Anti-FILTRIN Antibody - Protocols

Provided below are standard protocols that you may find useful for product applications.

- [Western Blot](#)
- [Blocking Peptides](#)
- [Dot Blot](#)
- [Immunohistochemistry](#)
- [Immunofluorescence](#)
- [Immunoprecipitation](#)
- [Flow Cytometry](#)
- [Cell Culture](#)

### Anti-FILTRIN Antibody - Images



Western blot analysis of FILTRIN expression in HEK293T (A), HeLa (B), mouse brain (C), rat brain (D) whole cell lysates.

### Anti-FILTRIN Antibody - Background

KLH-conjugated synthetic peptide encompassing a sequence within the N-term region of human FILTRIN. The exact sequence is proprietary.