

**Anti-FGF17 Antibody**  
**Rabbit polyclonal antibody to FGF17**  
**Catalog # AP60168****Specification**

---

**Anti-FGF17 Antibody - Product Information**

Application	<b>WB</b>
Primary Accession	<a href="#">O60258</a>
Other Accession	<a href="#">P63075</a>
Reactivity	<b>Human, Mouse, Rat, Monkey, Pig, Bovine, SARS, Dog</b>
Host	<b>Rabbit</b>
Clonality	<b>Polyclonal</b>
Calculated MW	<b>24891</b>

**Anti-FGF17 Antibody - Additional Information****Gene ID** 8822**Other Names**

Fibroblast growth factor 17; FGF-17

**Target/Specificity**

Recognizes endogenous levels of FGF17 protein.

**Dilution**

WB~~WB (1/500 - 1/1000)

**Format**

Liquid in 0.42% Potassium phosphate, 0.87% Sodium chloride, pH 7.3, 30% glycerol, and 0.09% (W/V) sodium azide.

**Storage**

Store at -20 °C. Stable for 12 months from date of receipt

**Anti-FGF17 Antibody - Protein Information****Name** FGF17**Function**

Plays an important role in the regulation of embryonic development and as signaling molecule in the induction and patterning of the embryonic brain. Required for normal brain development.

**Cellular Location**

Secreted.

**Tissue Location**

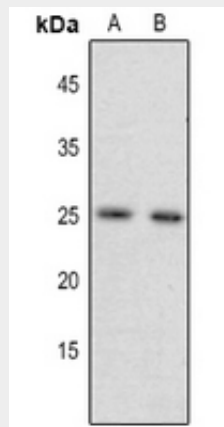
Preferentially expressed in the embryonic brain.

## Anti-FGF17 Antibody - Protocols

Provided below are standard protocols that you may find useful for product applications.

- [Western Blot](#)
- [Blocking Peptides](#)
- [Dot Blot](#)
- [Immunohistochemistry](#)
- [Immunofluorescence](#)
- [Immunoprecipitation](#)
- [Flow Cytometry](#)
- [Cell Culture](#)

## Anti-FGF17 Antibody - Images



Western blot analysis of FGF17 expression in mouse liver (A), rat liver (B) whole cell lysates.

## Anti-FGF17 Antibody - Background

KLH-conjugated synthetic peptide encompassing a sequence within the C-term region of human FGF17. The exact sequence is proprietary.