

Anti-Factor XI LC Antibody
Rabbit polyclonal antibody to Factor XI LC
Catalog # AP60167

Specification

Anti-Factor XI LC Antibody - Product Information

Application	WB
Primary Accession	P03951
Other Accession	O91Y47
Reactivity	Human, Mouse, Rat
Host	Rabbit
Clonality	Polyclonal
Calculated MW	70109

Anti-Factor XI LC Antibody - Additional Information

Gene ID 2160

Other Names

Coagulation factor XI; FXI; Plasma thromboplastin antecedent; PTA

Target/Specificity

Recognizes endogenous levels of Factor XI LC protein.

Dilution

WB~~WB (1/500 - 1/1000)

Format

Liquid in 0.42% Potassium phosphate, 0.87% Sodium chloride, pH 7.3, 30% glycerol, and 0.09% (W/V) sodium azide.

Storage

Store at -20 °C. Stable for 12 months from date of receipt

Anti-Factor XI LC Antibody - Protein Information

Name F11

Function

Factor XI triggers the middle phase of the intrinsic pathway of blood coagulation by activating factor IX.

Cellular Location

Secreted.

Tissue Location

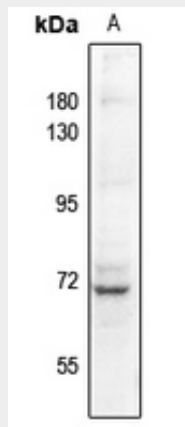
Isoform 2 is produced by platelets and megakaryocytes but absent from other blood cells

Anti-Factor XI LC Antibody - Protocols

Provided below are standard protocols that you may find useful for product applications.

- [Western Blot](#)
- [Blocking Peptides](#)
- [Dot Blot](#)
- [Immunohistochemistry](#)
- [Immunofluorescence](#)
- [Immunoprecipitation](#)
- [Flow Cytometry](#)
- [Cell Culture](#)

Anti-Factor XI LC Antibody - Images



Western blot analysis of Factor XI LC expression in Jurkat (A) whole cell lysates.

Anti-Factor XI LC Antibody - Background

KLH-conjugated synthetic peptide encompassing a sequence within the center region of human Factor XI LC. The exact sequence is proprietary.