

Anti-Factor IX LC Antibody
Rabbit polyclonal antibody to Factor IX LC
Catalog # AP60166

Specification

Anti-Factor IX LC Antibody - Product Information

| | |
|-------------------|------------------------|
| Application | WB |
| Primary Accession | P00740 |
| Other Accession | P16294 |
| Reactivity | Human, Mouse, Rat |
| Host | Rabbit |
| Clonality | Polyclonal |
| Calculated MW | 51778 |

Anti-Factor IX LC Antibody - Additional Information

Gene ID 2158

Other Names

Coagulation factor IX; Christmas factor; Plasma thromboplastin component; PTC

Target/Specificity

Recognizes endogenous levels of Factor IX LC protein.

Dilution

WB~~WB (1/500 - 1/1000)

Format

Liquid in 0.42% Potassium phosphate, 0.87% Sodium chloride, pH 7.3, 30% glycerol, and 0.09% (W/V) sodium azide.

Storage

Store at -20 °C. Stable for 12 months from date of receipt

Anti-Factor IX LC Antibody - Protein Information

Name F9

Function

Factor IX is a vitamin K-dependent plasma protein that participates in the intrinsic pathway of blood coagulation by converting factor X to its active form in the presence of Ca(2+) ions, phospholipids, and factor VIIIa.

Cellular Location

Secreted

Tissue Location

Detected in blood plasma (at protein level) (PubMed:19846852, PubMed:2592373,

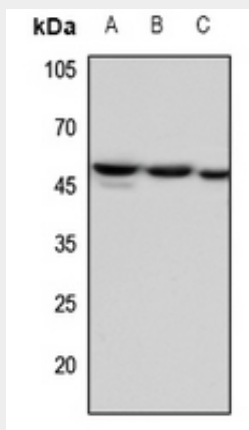
PubMed:3857619, PubMed:8295821, PubMed:9169594). Synthesized primarily in the liver and secreted in plasma.

Anti-Factor IX LC Antibody - Protocols

Provided below are standard protocols that you may find useful for product applications.

- [Western Blot](#)
- [Blocking Peptides](#)
- [Dot Blot](#)
- [Immunohistochemistry](#)
- [Immunofluorescence](#)
- [Immunoprecipitation](#)
- [Flow Cytometry](#)
- [Cell Culture](#)

Anti-Factor IX LC Antibody - Images



Western blot analysis of Factor IX LC expression in mouse liver (A), mouse lung (B), rat liver (C) whole cell lysates.

Anti-Factor IX LC Antibody - Background

KLH-conjugated synthetic peptide encompassing a sequence within the center region of human Factor IX LC. The exact sequence is proprietary.