

Anti-EYA1 Antibody
Rabbit polyclonal antibody to EYA1
Catalog # AP60165**Specification**

Anti-EYA1 Antibody - Product Information

Application	WB
Primary Accession	O99502 , O95677
Other Accession	P97767 , O9Z191
Reactivity	Human, Mouse, Rat, Zebrafish, Monkey
Host	Rabbit
Clonality	Polyclonal

Anti-EYA1 Antibody - Additional Information**Other Names**

EYA1; Eyes absent homolog 1; EYA4; Eyes absent homolog 4

Target/Specificity

Recognizes endogenous levels of EYA1 protein.

Dilution

WB~~WB (1/500 - 1/1000)

Format

Liquid in 0.42% Potassium phosphate, 0.87% Sodium chloride, pH 7.3, 30% glycerol, and 0.09% (W/V) sodium azide.

Storage

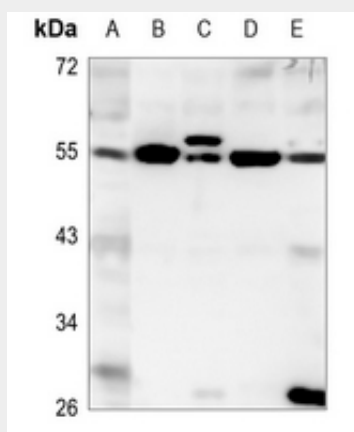
Store at -20 °C. Stable for 12 months from date of receipt

Anti-EYA1 Antibody - Protein Information**Anti-EYA1 Antibody - Protocols**

Provided below are standard protocols that you may find useful for product applications.

- [Western Blot](#)
- [Blocking Peptides](#)
- [Dot Blot](#)
- [Immunohistochemistry](#)
- [Immunofluorescence](#)
- [Immunoprecipitation](#)
- [Flow Cytometry](#)
- [Cell Culture](#)

Anti-EYA1 Antibody - Images



Western blot analysis of EYA1 expression in PC3 (A), mouse brain (B), mouse testis (C), rat brain (D), rat testis (E) whole cell lysates.

Anti-EYA1 Antibody - Background

KLH-conjugated synthetic peptide encompassing a sequence within the center region of human EYA1. The exact sequence is proprietary.