

**Anti-EB2 Antibody**  
Rabbit polyclonal antibody to EB2  
Catalog # AP60160**Specification**

---

**Anti-EB2 Antibody - Product Information**

Application	<b>WB</b>
Primary Accession	<a href="#">Q15555</a>
Other Accession	<a href="#">Q8R001</a>
Reactivity	<b>Human, Mouse, Rat, Monkey, Chicken, Bovine</b>
Host	<b>Rabbit</b>
Clonality	<b>Polyclonal</b>
Calculated MW	<b>37031</b>

**Anti-EB2 Antibody - Additional Information****Gene ID** 10982**Other Names**

RP1; Microtubule-associated protein RP/EB family member 2; APC-binding protein EB2; End-binding protein 2; EB2

**Target/Specificity**

Recognizes endogenous levels of EB2 protein.

**Dilution**

WB~~WB (1/500 - 1/1000)

**Format**

Liquid in 0.42% Potassium phosphate, 0.87% Sodium chloride, pH 7.3, 30% glycerol, and 0.09% (W/V) sodium azide.

**Storage**

Store at -20 °C. Stable for 12 months from date of receipt

**Anti-EB2 Antibody - Protein Information****Name** MAPRE2**Synonyms** RP1**Function**

May be involved in microtubule polymerization, and spindle function by stabilizing microtubules and anchoring them at centrosomes. May play a role in cell migration (By similarity).

**Cellular Location**

Cytoplasm, cytoskeleton. Note=Associated with the microtubule network. Accumulates at the plus

end of microtubules

#### **Tissue Location**

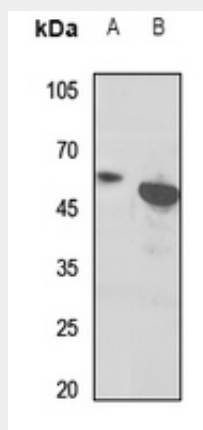
Expressed in different tumor cell lines. Up- regulated in activated B- and T-lymphocytes

#### **Anti-EB2 Antibody - Protocols**

Provided below are standard protocols that you may find useful for product applications.

- [Western Blot](#)
- [Blocking Peptides](#)
- [Dot Blot](#)
- [Immunohistochemistry](#)
- [Immunofluorescence](#)
- [Immunoprecipitation](#)
- [Flow Cytometry](#)
- [Cell Culture](#)

#### **Anti-EB2 Antibody - Images**



Western blot analysis of EB2 expression in mouse heart (A), rat heart (B) whole cell lysates.

#### **Anti-EB2 Antibody - Background**

KLH-conjugated synthetic peptide encompassing a sequence within the center region of human EB2. The exact sequence is proprietary.