

Anti-DNAJB2 Antibody
Rabbit polyclonal antibody to DNAJB2
Catalog # AP60158

Specification

Anti-DNAJB2 Antibody - Product Information

Application	WB
Primary Accession	P25686
Other Accession	O9OYI5
Reactivity	Human, Mouse, Rat, Monkey
Host	Rabbit
Clonality	Polyclonal
Calculated MW	35580

Anti-DNAJB2 Antibody - Additional Information

Gene ID 3300

Other Names

HSJ1; HSPF3; DnaJ homolog subfamily B member 2; DnaJ protein homolog 1; Heat shock 40 kDa protein 3; Heat shock protein J1; HSJ-1

Target/Specificity

Recognizes endogenous levels of DNAJB2 protein.

Dilution

WB~~WB (1/500 - 1/1000)

Format

Liquid in 0.42% Potassium phosphate, 0.87% Sodium chloride, pH 7.3, 30% glycerol, and 0.09% (W/V) sodium azide.

Storage

Store at -20 °C. Stable for 12 months from date of receipt

Anti-DNAJB2 Antibody - Protein Information

Name DNAJB2 ([HGNC:5228](#))

Function

Functions as a co-chaperone, regulating the substrate binding and activating the ATPase activity of chaperones of the HSP70/heat shock protein 70 family (PubMed:22219199, PubMed:7957263). In parallel, also contributes to the ubiquitin-dependent proteasomal degradation of misfolded proteins (PubMed:15936278, PubMed:21625540). Thereby, may regulate the aggregation and promote the functional recovery of misfolded proteins like HTT,

MC4R, PRKN, RHO and SOD1 and be crucial for many biological processes (PubMed:12754272, PubMed:20889486, PubMed:21719532, PubMed:22396390, PubMed:24023695). Isoform 1 which is localized to the endoplasmic reticulum membranes may specifically function in ER-associated protein degradation of misfolded proteins (PubMed:15936278).

Cellular Location

[Isoform 2]: Cytoplasm. Nucleus

Tissue Location

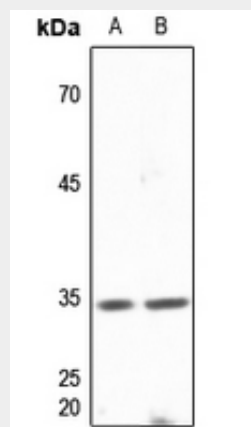
More abundantly expressed in neocortex, cerebellum, spinal cord and retina where it is expressed by neuronal cells (at protein level) (PubMed:12754272, PubMed:1599432). Detected at much lower level in non-neuronal tissues including kidney, lung, heart, skeletal muscle, spleen and testis (at protein level) (PubMed:12754272, PubMed:1599432). Isoform 1 is more abundant in neocortex and cerebellum compared to isoform 2 (at protein level) (PubMed:12754272)

Anti-DNAJB2 Antibody - Protocols

Provided below are standard protocols that you may find useful for product applications.

- [Western Blot](#)
- [Blocking Peptides](#)
- [Dot Blot](#)
- [Immunohistochemistry](#)
- [Immunofluorescence](#)
- [Immunoprecipitation](#)
- [Flow Cytometry](#)
- [Cell Culture](#)

Anti-DNAJB2 Antibody - Images



Western blot analysis of DNAJB2 expression in mouse brain (A), rat brain (B) whole cell lysates.

Anti-DNAJB2 Antibody - Background

KLH-conjugated synthetic peptide encompassing a sequence within the C-term region of human DNAJB2. The exact sequence is proprietary.