

**Anti-Dectin 2 Antibody**  
Rabbit polyclonal antibody to Dectin 2  
Catalog # AP60157

### Specification

---

#### Anti-Dectin 2 Antibody - Product Information

Application	WB
Primary Accession	<a href="#">O6EIG7</a>
Other Accession	<a href="#">O9JKF4</a>
Reactivity	Human, Mouse, Rat
Host	Rabbit
Clonality	Polyclonal
Calculated MW	23998

#### Anti-Dectin 2 Antibody - Additional Information

Gene ID 93978

#### Other Names

CLECSF10; DECTIN2; C-type lectin domain family 6 member A; C-type lectin superfamily member 10; Dendritic cell-associated C-type lectin 2; DC-associated C-type lectin 2; Dectin-2

#### Target/Specificity

Recognizes endogenous levels of Dectin 2 protein.

#### Dilution

WB~~WB (1/500 - 1/1000)

#### Format

Liquid in 0.42% Potassium phosphate, 0.87% Sodium chloride, pH 7.3, 30% glycerol, and 0.09% (W/V) sodium azide.

#### Storage

Store at -20 °C. Stable for 12 months from date of receipt

#### Anti-Dectin 2 Antibody - Protein Information

Name CLEC6A ([HGNC:14556](#))

#### Function

Calcium-dependent lectin that acts as a pattern recognition receptor (PRR) of the innate immune system: specifically recognizes and binds alpha-mannans on *C.albicans* hyphae (PubMed: [23911656](http://www.uniprot.org/citations/23911656), PubMed: [28652405](http://www.uniprot.org/citations/28652405)). Binding of *C.albicans* alpha-mannans to this receptor complex leads to phosphorylation of the immunoreceptor tyrosine-based activation motif (ITAM) of FCER1G, triggering activation of SYK, CARD9 and NF-kappa-B, consequently driving maturation of antigen-presenting cells and shaping antigen-specific priming of T-cells toward effector T-helper 1 and T-helper 17 cell subtypes (By

similarity). Recognizes also, in a mannose-dependent manner, allergens from house dust mite and fungi, by promoting cysteinyl leukotriene production (By similarity). Recognizes soluble elements from the eggs of *Shistosoma mansoni* altering adaptive immune responses (By similarity).

#### Cellular Location

Cell membrane; Single-pass type II membrane protein

#### Tissue Location

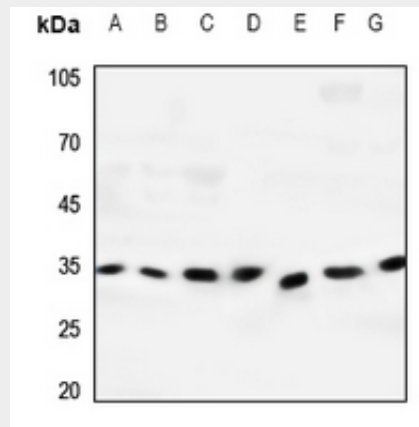
Expressed in lung, spleen, lymph node, leukocytes, bone marrow, tonsils and dendritic cells. Strongly expressed in purified monocytes and weakly in B-cells. In peripheral blood cells, preferentially expressed in plasmacytoids rather than myeloids

### Anti-Dectin 2 Antibody - Protocols

Provided below are standard protocols that you may find useful for product applications.

- [Western Blot](#)
- [Blocking Peptides](#)
- [Dot Blot](#)
- [Immunohistochemistry](#)
- [Immunofluorescence](#)
- [Immunoprecipitation](#)
- [Flow Cytometry](#)
- [Cell Culture](#)

### Anti-Dectin 2 Antibody - Images



Western blot analysis of Dectin 2 expression in HEK293T (A), Hela (B), A375 (C), mouse lung (D), mouse spleen (E), rat lung (F), rat spleen (G) whole cell lysates.

### Anti-Dectin 2 Antibody - Background

KLH-conjugated synthetic peptide encompassing a sequence within the center region of human Dectin 2. The exact sequence is proprietary.