

**Anti-CD41 HC Antibody**  
Rabbit polyclonal antibody to CD41 HC  
Catalog # AP60154

**Specification**

---

**Anti-CD41 HC Antibody - Product Information**

Application	<b>WB</b>
Primary Accession	<a href="#">P08514</a>
Other Accession	<a href="#">Q9OUM0</a>
Reactivity	<b>Human, Mouse, Rat</b>
Host	<b>Rabbit</b>
Clonality	<b>Polyclonal</b>
Calculated MW	<b>113377</b>

**Anti-CD41 HC Antibody - Additional Information**

**Gene ID** 3674

**Other Names**

GP2B; ITGAB; Integrin alpha-IIb; GPalpha IIb; GPIIb; Platelet membrane glycoprotein IIb; CD41

**Target/Specificity**

Recognizes endogenous levels of CD41 HC protein.

**Dilution**

WB~~WB (1/500 - 1/1000)

**Format**

Liquid in 0.42% Potassium phosphate, 0.87% Sodium chloride, pH 7.3, 30% glycerol, and 0.09% (W/V) sodium azide.

**Storage**

Store at -20 °C. Stable for 12 months from date of receipt

**Anti-CD41 HC Antibody - Protein Information**

**Name** ITGA2B

**Synonyms** GP2B, ITGAB

**Function**

Integrin alpha-IIb/beta-3 is a receptor for fibronectin, fibrinogen, plasminogen, prothrombin, thrombospondin and vitronectin. It recognizes the sequence R-G-D in a wide array of ligands. It recognizes the sequence H-H-L-G-G-G-A-K-Q-A-G-D-V in fibrinogen gamma chain. Following activation integrin alpha-IIb/beta-3 brings about platelet/platelet interaction through binding of soluble fibrinogen. This step leads to rapid platelet aggregation which physically plugs ruptured endothelial cell surface.

**Cellular Location**

Membrane; Single-pass type I membrane protein.

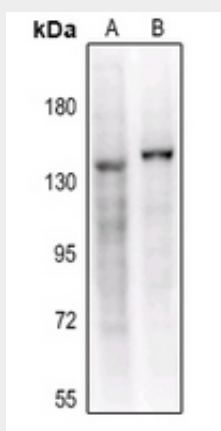
**Tissue Location**

Isoform 1 and isoform 2 are expressed in platelets and megakaryocytes, but not in reticulocytes. Not detected in Jurkat, nor in U937 cell lines (PubMed:2351656). Isoform 3 is expressed in prostate adenocarcinoma, as well as in several erythroleukemia, prostate adenocarcinoma and melanoma cell lines, including PC-3, DU-145, HEL, WM983A, WM983B and WM35. Not detected in platelets, nor in normal prostate (at protein level) (PubMed:9809974)

**Anti-CD41 HC Antibody - Protocols**

Provided below are standard protocols that you may find useful for product applications.

- [Western Blot](#)
- [Blocking Peptides](#)
- [Dot Blot](#)
- [Immunohistochemistry](#)
- [Immunofluorescence](#)
- [Immunoprecipitation](#)
- [Flow Cytometry](#)
- [Cell Culture](#)

**Anti-CD41 HC Antibody - Images**

Western blot analysis of CD41 HC expression in K562 (A), mouse testis (B) whole cell lysates.

**Anti-CD41 HC Antibody - Background**

KLH-conjugated synthetic peptide encompassing a sequence within the N-term region of human CD41 HC. The exact sequence is proprietary.