

Anti-CD269 Antibody
Rabbit polyclonal antibody to CD269
Catalog # AP60153

Specification

Anti-CD269 Antibody - Product Information

Application	WB
Primary Accession	O02223
Other Accession	O88472
Reactivity	Human, Mouse, Rat
Host	Rabbit
Clonality	Polyclonal
Calculated MW	20165

Anti-CD269 Antibody - Additional Information

Gene ID 608

Other Names

BCM; BCMA; Tumor necrosis factor receptor superfamily member 17; B-cell maturation protein; CD269

Target/Specificity

Recognizes endogenous levels of CD269 protein.

Dilution

WB~~WB (1/500 - 1/1000)

Format

Liquid in 0.42% Potassium phosphate, 0.87% Sodium chloride, pH 7.3, 30% glycerol, and 0.09% (W/V) sodium azide.

Storage

Store at -20 °C. Stable for 12 months from date of receipt

Anti-CD269 Antibody - Protein Information

Name TNFRSF17

Synonyms BCM, BCMA

Function

Receptor for TNFSF13B/BlyS/BAFF and TNFSF13/APRIL. Promotes B-cell survival and plays a role in the regulation of humoral immunity. Activates NF-kappa-B and JNK.

Cellular Location

Cell membrane; Single-pass type III membrane protein. Endomembrane system; Single-pass type III membrane protein Note=Perinuclear Golgi-like structures

Tissue Location

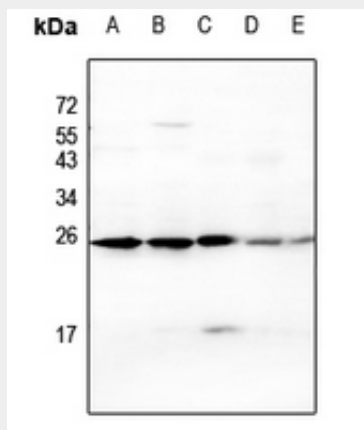
Expressed in mature B-cells, but not in T-cells or monocytes

Anti-CD269 Antibody - Protocols

Provided below are standard protocols that you may find useful for product applications.

- [Western Blot](#)
- [Blocking Peptides](#)
- [Dot Blot](#)
- [Immunohistochemistry](#)
- [Immunofluorescence](#)
- [Immunoprecipitation](#)
- [Flow Cytometry](#)
- [Cell Culture](#)

Anti-CD269 Antibody - Images



Western blot analysis of CD269 expression in HEK293T (A), U87MG (B), mouse spleen (C), PC12 (D), HepG2 (E) whole cell lysates.

Anti-CD269 Antibody - Background

KLH-conjugated synthetic peptide encompassing a sequence within the center region of human CD269. The exact sequence is proprietary.