

**Anti-CD156a Antibody**  
Rabbit polyclonal antibody to CD156a  
Catalog # AP60151

**Specification**

---

**Anti-CD156a Antibody - Product Information**

Application	WB
Primary Accession	<a href="#">P78325</a>
Other Accession	<a href="#">Q05910</a>
Reactivity	Human, Mouse, Rat
Host	Rabbit
Clonality	Polyclonal
Calculated MW	88771

**Anti-CD156a Antibody - Additional Information**

**Gene ID** 101

**Other Names**

MS2; Disintegrin and metalloproteinase domain-containing protein 8; ADAM 8; Cell surface antigen MS2; CD156a

**Target/Specificity**

Recognizes endogenous levels of CD156a protein.

**Dilution**

WB~~WB (1/500 - 1/1000)

**Format**

Liquid in 0.42% Potassium phosphate, 0.87% Sodium chloride, pH 7.3, 30% glycerol, and 0.09% (W/V) sodium azide.

**Storage**

Store at -20 °C. Stable for 12 months from date of receipt

**Anti-CD156a Antibody - Protein Information**

**Name** ADAM8

**Synonyms** MS2

**Function**

Possible involvement in extravasation of leukocytes.

**Cellular Location**

Membrane; Single-pass type I membrane protein.

**Tissue Location**

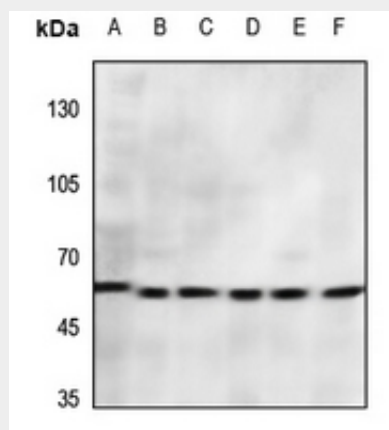
Expressed on neutrophils and monocytes.

### Anti-CD156a Antibody - Protocols

Provided below are standard protocols that you may find useful for product applications.

- [Western Blot](#)
- [Blocking Peptides](#)
- [Dot Blot](#)
- [Immunohistochemistry](#)
- [Immunofluorescence](#)
- [Immunoprecipitation](#)
- [Flow Cytometry](#)
- [Cell Culture](#)

### Anti-CD156a Antibody - Images



Western blot analysis of CD156a expression in mouse lung (A), mouse brain (B), rat spleen (C), rat lung (D), rat brain (E), rat spleen (F) whole cell lysates.

### Anti-CD156a Antibody - Background

KLH-conjugated synthetic peptide encompassing a sequence within the center region of human CD156a. The exact sequence is proprietary.