

**Anti-CD123 Antibody**  
Rabbit polyclonal antibody to CD123  
Catalog # AP60150

**Specification**

---

**Anti-CD123 Antibody - Product Information**

Application	WB
Primary Accession	<a href="#">P26951</a>
Other Accession	<a href="#">P26952</a>
Reactivity	Human, Mouse, Rat
Host	Rabbit
Clonality	Polyclonal
Calculated MW	43330

**Anti-CD123 Antibody - Additional Information**

Gene ID 3563

**Other Names**

IL3R; Interleukin-3 receptor subunit alpha; IL-3 receptor subunit alpha; IL-3R subunit alpha; IL-3R-alpha; IL-3RA; CD123

**Target/Specificity**

Recognizes endogenous levels of CD123 protein.

**Dilution**

WB~~WB (1/500 - 1/1000)

**Format**

Liquid in 0.42% Potassium phosphate, 0.87% Sodium chloride, pH 7.3, 30% glycerol, and 0.09% (W/V) sodium azide.

**Storage**

Store at -20 °C. Stable for 12 months from date of receipt

**Anti-CD123 Antibody - Protein Information**

Name IL3RA ([HGNC:6012](#))

Synonyms IL3R

**Function**

Cell surface receptor for IL3 expressed on hematopoietic progenitor cells, monocytes and B-lymphocytes that controls the production and differentiation of hematopoietic progenitor cells into lineage-restricted cells (PubMed:<a href="http://www.uniprot.org/citations/10527461" target="\_blank">10527461</a>). Ligand stimulation rapidly induces heterodimerization with IL3RB, phosphorylation and enzyme activity of effector proteins such as JAK2 and PI3K that play a role in signaling cell proliferation and differentiation. Activation of JAK2 leads to STAT5-mediated

transcriptional program (By similarity).

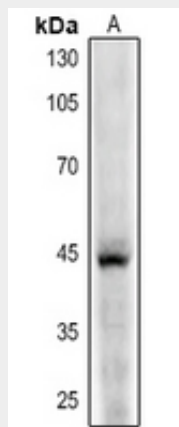
**Cellular Location**

Membrane; Single-pass type I membrane protein.

**Anti-CD123 Antibody - Protocols**

Provided below are standard protocols that you may find useful for product applications.

- [Western Blot](#)
- [Blocking Peptides](#)
- [Dot Blot](#)
- [Immunohistochemistry](#)
- [Immunofluorescence](#)
- [Immunoprecipitation](#)
- [Flow Cytometry](#)
- [Cell Culture](#)

**Anti-CD123 Antibody - Images**

Western blot analysis of CD123 expression in Hela (A) whole cell lysates.

**Anti-CD123 Antibody - Background**

KLH-conjugated synthetic peptide encompassing a sequence within the center region of human CD123. The exact sequence is proprietary.