

Anti-Cathepsin C LC Antibody
Rabbit polyclonal antibody to Cathepsin C LC
Catalog # AP60147

Specification

Anti-Cathepsin C LC Antibody - Product Information

Application	WB
Primary Accession	P53634
Other Accession	P97821
Reactivity	Human, Mouse, Rat, Bovine, Dog
Host	Rabbit
Clonality	Polyclonal
Calculated MW	51854

Anti-Cathepsin C LC Antibody - Additional Information

Gene ID 1075

Other Names

CPPI; Dipeptidyl peptidase 1; Cathepsin C; Cathepsin J; Dipeptidyl peptidase I; DPP-I; DPPI; Dipeptidyl transferase

Target/Specificity

Recognizes endogenous levels of Cathepsin C LC protein.

Dilution

WB~~WB (1/500 - 1/1000)

Format

Liquid in 0.42% Potassium phosphate, 0.87% Sodium chloride, pH 7.3, 30% glycerol, and 0.09% (W/V) sodium azide.

Storage

Store at -20 °C. Stable for 12 months from date of receipt

Anti-Cathepsin C LC Antibody - Protein Information

Name CTSC

Synonyms CPPI

Function

Thiol protease (PubMed: [1586157](http://www.uniprot.org/citations/1586157)). Has dipeptidylpeptidase activity (PubMed: [1586157](http://www.uniprot.org/citations/1586157)). Active against a broad range of dipeptide substrates composed of both polar and hydrophobic amino acids (PubMed: [1586157](http://www.uniprot.org/citations/1586157)). Proline cannot occupy the P1 position and arginine cannot occupy the P2 position of the substrate

(PubMed:1586157). Can act as both an exopeptidase and endopeptidase (PubMed:1586157). Activates serine proteases such as elastase, cathepsin G and granzymes A and B (PubMed:8428921).

Cellular Location

Lysosome.

Tissue Location

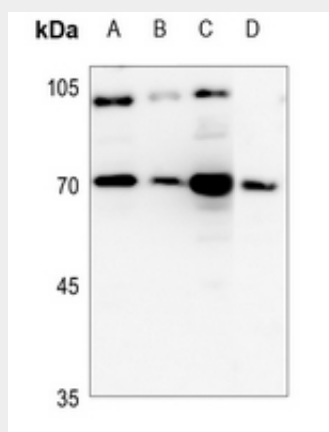
Ubiquitous. Highly expressed in lung, kidney and placenta. Detected at intermediate levels in colon, small intestine, spleen and pancreas.

Anti-Cathepsin C LC Antibody - Protocols

Provided below are standard protocols that you may find useful for product applications.

- [Western Blot](#)
- [Blocking Peptides](#)
- [Dot Blot](#)
- [Immunohistochemistry](#)
- [Immunofluorescence](#)
- [Immunoprecipitation](#)
- [Flow Cytometry](#)
- [Cell Culture](#)

Anti-Cathepsin C LC Antibody - Images



Western blot analysis of Cathepsin C LC expression in Hela (A), H466 (B), mouse lung (C), rat lung (D) whole cell lysates.

Anti-Cathepsin C LC Antibody - Background

KLH-conjugated synthetic peptide encompassing a sequence within the C-term region of human Cathepsin C LC. The exact sequence is proprietary.