

**Anti-CAPNS2 Antibody**  
Rabbit polyclonal antibody to CAPNS2  
Catalog # AP60145

## Specification

---

### Anti-CAPNS2 Antibody - Product Information

Application	WB
Primary Accession	<a href="#">O96L46</a>
Other Accession	<a href="#">O9D7J7</a>
Reactivity	Human, Mouse, Rat
Host	Rabbit
Clonality	Polyclonal
Calculated MW	27660

### Anti-CAPNS2 Antibody - Additional Information

**Gene ID** 84290

#### Other Names

Calpain small subunit 2; CSS2; Calcium-dependent protease small subunit 2

#### Target/Specificity

Recognizes endogenous levels of CAPNS2 protein.

#### Dilution

WB~~WB (1/500 - 1/1000)

#### Format

Liquid in 0.42% Potassium phosphate, 0.87% Sodium chloride, pH 7.3, 30% glycerol, and 0.09% (W/V) sodium azide.

#### Storage

Store at -20 °C. Stable for 12 months from date of receipt

### Anti-CAPNS2 Antibody - Protein Information

**Name** CAPNS2

#### Function

Calcium-regulated non-lysosomal thiol-protease which catalyzes limited proteolysis of substrates involved in cytoskeletal remodeling and signal transduction. This small subunit may act as a tissue-specific chaperone of the large subunit, possibly by helping it fold into its correct conformation for activity.

#### Cellular Location

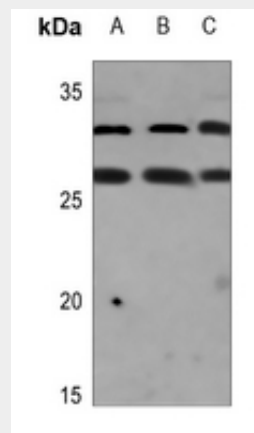
Cytoplasm. Cell membrane. Note=Translocates to the plasma membrane upon calcium binding.

## Anti-CAPNS2 Antibody - Protocols

Provided below are standard protocols that you may find useful for product applications.

- [Western Blot](#)
- [Blocking Peptides](#)
- [Dot Blot](#)
- [Immunohistochemistry](#)
- [Immunofluorescence](#)
- [Immunoprecipitation](#)
- [Flow Cytometry](#)
- [Cell Culture](#)

## Anti-CAPNS2 Antibody - Images



Western blot analysis of CAPNS2 expression in HEK293T (A), A549 (B), H1792 (C) whole cell lysates.

## Anti-CAPNS2 Antibody - Background

KLH-conjugated synthetic peptide encompassing a sequence within the C-term region of human CAPNS2. The exact sequence is proprietary.