

**Anti-CABP2 Antibody**  
Rabbit polyclonal antibody to CABP2  
Catalog # AP60144

---

## Specification

### Anti-CABP2 Antibody - Product Information

Application	WB
Primary Accession	<a href="#">O9NPB3</a>
Other Accession	<a href="#">O9JLK4</a>
Reactivity	Human, Mouse, Rat, Monkey, Bovine
Host	Rabbit
Clonality	Polyclonal
Calculated MW	24482

### Anti-CABP2 Antibody - Additional Information

**Gene ID** 51475

#### Other Names

Calcium-binding protein 2; CaBP2

#### Target/Specificity

Recognizes endogenous levels of CABP2 protein.

#### Dilution

WB~~WB (1/500 - 1/1000)

#### Format

Liquid in 0.42% Potassium phosphate, 0.87% Sodium chloride, pH 7.3, 30% glycerol, and 0.09% (W/V) sodium azide.

#### Storage

Store at -20 °C. Stable for 12 months from date of receipt

### Anti-CABP2 Antibody - Protein Information

**Name** CABP2

#### Function

Required for sound encoding at inner hair cells (IHCs) synapses, likely via inhibition of the inactivation of voltage-gated calcium channel of type 1.3 (Cav1.3) in the IHCs (PubMed:<a href="http://www.uniprot.org/citations/28183797" target="\_blank">28183797</a>). Required for the normal transfer of light signals through the retina (By similarity).

#### Cellular Location

Cytoplasm, perinuclear region. Cell membrane; Lipid-anchor; Cytoplasmic side. Golgi apparatus

#### Tissue Location

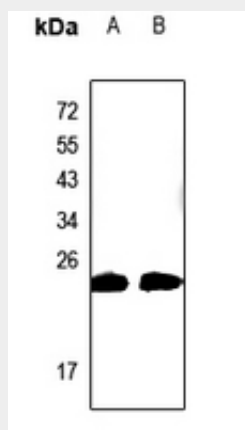
Retina..

### Anti-CABP2 Antibody - Protocols

Provided below are standard protocols that you may find useful for product applications.

- [Western Blot](#)
- [Blocking Peptides](#)
- [Dot Blot](#)
- [Immunohistochemistry](#)
- [Immunofluorescence](#)
- [Immunoprecipitation](#)
- [Flow Cytometry](#)
- [Cell Culture](#)

### Anti-CABP2 Antibody - Images



Western blot analysis of CABP2 expression in mouse eyes (A), rat eyes (B) whole cell lysates.

### Anti-CABP2 Antibody - Background

KLH-conjugated synthetic peptide encompassing a sequence within the center region of human CABP2. The exact sequence is proprietary.