

**Anti-BGT-1 Antibody**  
Rabbit polyclonal antibody to BGT-1  
Catalog # AP60143

### Specification

---

#### Anti-BGT-1 Antibody - Product Information

|                   |                        |
|-------------------|------------------------|
| Application       | WB                     |
| Primary Accession | <a href="#">P48065</a> |
| Other Accession   | <a href="#">P31651</a> |
| Reactivity        | Human, Mouse, Rat      |
| Host              | Rabbit                 |
| Clonality         | Polyclonal             |
| Calculated MW     | 69368                  |

#### Anti-BGT-1 Antibody - Additional Information

Gene ID 6539

#### Other Names

Sodium- and chloride-dependent betaine transporter; BGT-1; Na(+)/Cl(-) betaine/GABA transporter; Solute carrier family 6 member 12

#### Target/Specificity

Recognizes endogenous levels of BGT-1 protein.

#### Dilution

WB~~WB (1/500 - 1/1000)

#### Format

Liquid in 0.42% Potassium phosphate, 0.87% Sodium chloride, pH 7.3, 30% glycerol, and 0.09% (W/V) sodium azide.

#### Storage

Store at -20 °C. Stable for 12 months from date of receipt

#### Anti-BGT-1 Antibody - Protein Information

Name SLC6A12 ([HGNC:11045](#))

#### Function

Transporter that mediates cellular uptake of betaine and GABA in a sodium- and chloride-dependent process (PubMed:<a href="http://www.uniprot.org/citations/7589472" target="\_blank">7589472</a>). May have a role in regulation of GABAergic transmission in the brain through the reuptake of GABA into presynaptic terminals, as well as in osmotic regulation. Probably also involved in renal and hepatic osmotic regulation (By similarity).

#### Cellular Location

Basolateral cell membrane {ECO:0000250|UniProtKB:P31651}; Multi-pass membrane protein. Cell

membrane {ECO:0000250|UniProtKB:P31651}; Multi-pass membrane protein. Note=In kidney, locates in basolateral membranes of renal medulla. In liver, locates in hepatocytes cell membrane. {ECO:0000250|UniProtKB:P31651}

#### Tissue Location

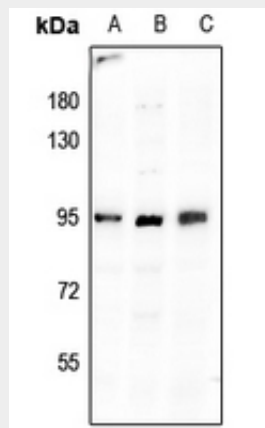
Expressed in kidney, liver, heart, skeletal muscle, placenta, and a widespread distribution in the brain

#### Anti-BGT-1 Antibody - Protocols

Provided below are standard protocols that you may find useful for product applications.

- [Western Blot](#)
- [Blocking Peptides](#)
- [Dot Blot](#)
- [Immunohistochemistry](#)
- [Immunofluorescence](#)
- [Immunoprecipitation](#)
- [Flow Cytometry](#)
- [Cell Culture](#)

#### Anti-BGT-1 Antibody - Images



Western blot analysis of BGT-1 expression in NIH3T3 (A), LO2 (B), SGC7901 (C) whole cell lysates.

#### Anti-BGT-1 Antibody - Background

KLH-conjugated synthetic peptide encompassing a sequence within the C-term region of human BGT-1. The exact sequence is proprietary.