

Anti-BAMBI Antibody
Rabbit polyclonal antibody to BAMBI
Catalog # AP60142**Specification**

Anti-BAMBI Antibody - Product Information

Application	WB
Primary Accession	O13145
Other Accession	O9D0L6
Reactivity	Human, Mouse, Rat, Chicken, Bovine, SARS, Dog
Host	Rabbit
Clonality	Polyclonal
Calculated MW	29108

Anti-BAMBI Antibody - Additional Information**Gene ID** 25805**Other Names**

NMA; BMP and activin membrane-bound inhibitor homolog; Non-metastatic gene A protein; Putative transmembrane protein NMA

Target/Specificity

Recognizes endogenous levels of BAMBI protein.

Dilution

WB~~WB (1/500 - 1/1000)

Format

Liquid in 0.42% Potassium phosphate, 0.87% Sodium chloride, pH 7.3, 30% glycerol, and 0.09% (W/V) sodium azide.

Storage

Store at -20 °C. Stable for 12 months from date of receipt

Anti-BAMBI Antibody - Protein Information**Name** BAMBI**Synonyms** NMA**Function**

Negatively regulates TGF-beta signaling.

Cellular Location

Membrane; Single-pass type I membrane protein

Tissue Location

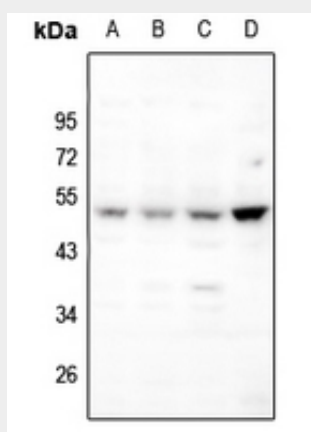
High expression in kidney medulla, placenta and spleen; low in kidney cortex, liver, prostate and gut. Not expressed in normal skin, expression is high in melanocytes and in 3 out of 11 melanoma metastases tested

Anti-BAMBI Antibody - Protocols

Provided below are standard protocols that you may find useful for product applications.

- [Western Blot](#)
- [Blocking Peptides](#)
- [Dot Blot](#)
- [Immunohistochemistry](#)
- [Immunofluorescence](#)
- [Immunoprecipitation](#)
- [Flow Cytometry](#)
- [Cell Culture](#)

Anti-BAMBI Antibody - Images



Western blot analysis of BAMBI expression in A375 (A), HEK293T (B), H1792 (C), mouse embryo (D) whole cell lysates.

Anti-BAMBI Antibody - Background

KLH-conjugated synthetic peptide encompassing a sequence within the center region of human BAMBI. The exact sequence is proprietary.