

**Anti-ANKRD20A1 Antibody**  
Rabbit polyclonal antibody to ANKRD20A1  
Catalog # AP60141

## Specification

---

### Anti-ANKRD20A1 Antibody - Product Information

Application	WB
Primary Accession	<a href="#">Q5TYW2</a>
Reactivity	Human, Mouse, Rat
Host	Rabbit
Clonality	Polyclonal
Calculated MW	94048

### Anti-ANKRD20A1 Antibody - Additional Information

**Gene ID** 84210

#### Other Names

ANKRD20A; Ankyrin repeat domain-containing protein 20A1

#### Target/Specificity

Recognizes endogenous levels of ANKRD20A1 protein.

#### Dilution

WB~~WB (1/500 - 1/1000)

#### Format

Liquid in 0.42% Potassium phosphate, 0.87% Sodium chloride, pH 7.3, 30% glycerol, and 0.09% (W/V) sodium azide.

#### Storage

Store at -20 °C. Stable for 12 months from date of receipt

### Anti-ANKRD20A1 Antibody - Protein Information

**Name** ANKRD20A1

**Synonyms** ANKRD20A

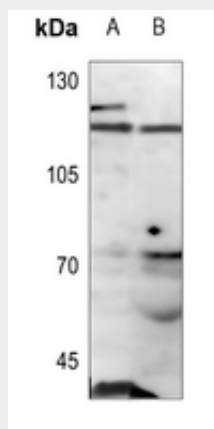
### Anti-ANKRD20A1 Antibody - Protocols

Provided below are standard protocols that you may find useful for product applications.

- [Western Blot](#)
- [Blocking Peptides](#)
- [Dot Blot](#)

- [Immunohistochemistry](#)
- [Immunofluorescence](#)
- [Immunoprecipitation](#)
- [Flow Cytometry](#)
- [Cell Culture](#)

### Anti-ANKRD20A1 Antibody - Images



Western blot analysis of ANKRD20A1 expression in mouse liver (A), rat liver (B) whole cell lysates.

### Anti-ANKRD20A1 Antibody - Background

KLH-conjugated synthetic peptide encompassing a sequence within the center region of human ANKRD20A1. The exact sequence is proprietary.