

Anti-AID Antibody
Rabbit polyclonal antibody to AID
Catalog # AP60139

Specification

Anti-AID Antibody - Product Information

Application	WB
Primary Accession	O9GZX7
Other Accession	O9WVE0
Reactivity	Human, Mouse, Rat
Host	Rabbit
Clonality	Polyclonal
Calculated MW	23954

Anti-AID Antibody - Additional Information

Gene ID 57379

Other Names

AID; Single-stranded DNA cytosine deaminase; Activation-induced cytidine deaminase; Cytidine aminohydrolase

Target/Specificity

Recognizes endogenous levels of AID protein.

Dilution

WB~~WB (1/500 - 1/1000)

Format

Liquid in 0.42% Potassium phosphate, 0.87% Sodium chloride, pH 7.3, 30% glycerol, and 0.09% (W/V) sodium azide.

Storage

Store at -20 °C. Stable for 12 months from date of receipt

Anti-AID Antibody - Protein Information

Name AICDA

Synonyms AID

Function

Single-stranded DNA-specific cytidine deaminase. Involved in somatic hypermutation (SHM), gene conversion, and class-switch recombination (CSR) in B-lymphocytes by deaminating C to U during transcription of Ig-variable (V) and Ig-switch (S) region DNA. Required for several crucial steps of B-cell terminal differentiation necessary for efficient antibody responses (PubMed:18722174, PubMed:21385873, PubMed:21385873, PubMed:21385873)

<http://www.uniprot.org/citations/21518874> target="_blank">21518874, PubMed:27716525). May also play a role in the epigenetic regulation of gene expression by participating in DNA demethylation (PubMed:21496894).

Cellular Location

Nucleus. Cytoplasm, cytosol Note=Predominantly cytosolic (PubMed:21385873). In the presence of MCM3AP/GANP, relocalizes to the nucleus (By similarity) {ECO:0000250|UniProtKB:Q9WVE0, ECO:0000269|PubMed:21385873}

Tissue Location

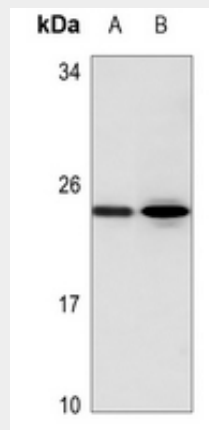
Strongly expressed in lymph nodes and tonsils.

Anti-AID Antibody - Protocols

Provided below are standard protocols that you may find useful for product applications.

- [Western Blot](#)
- [Blocking Peptides](#)
- [Dot Blot](#)
- [Immunohistochemistry](#)
- [Immunofluorescence](#)
- [Immunoprecipitation](#)
- [Flow Cytometry](#)
- [Cell Culture](#)

Anti-AID Antibody - Images



Western blot analysis of AID expression in mouse lung (A), rat lung (B) whole cell lysates.

Anti-AID Antibody - Background

KLH-conjugated synthetic peptide encompassing a sequence within the N-term region of human AID. The exact sequence is proprietary.