

**Anti-Factor B Antibody**  
**Rabbit polyclonal antibody to Factor B**  
**Catalog # AP60137****Specification**

---

**Anti-Factor B Antibody - Product Information**

Application	<b>WB</b>
Primary Accession	<a href="#">P00751</a>
Other Accession	<a href="#">P04186</a>
Reactivity	<b>Human, Mouse, Rat, Bovine</b>
Host	<b>Rabbit</b>
Clonality	<b>Polyclonal</b>
Calculated MW	<b>85533</b>

**Anti-Factor B Antibody - Additional Information****Gene ID** 629**Other Names**

BF; BFD; Complement factor B; C3/C5 convertase; Glycine-rich beta glycoprotein; GBG; PBF2; Properdin factor B

**Target/Specificity**

Recognizes endogenous levels of Factor B protein.

**Dilution**

WB~~WB (1/500 - 1/1000)

**Format**

Liquid in 0.42% Potassium phosphate, 0.87% Sodium chloride, pH 7.3, 30% glycerol, and 0.09% (W/V) sodium azide.

**Storage**

Store at -20 °C. Stable for 12 months from date of receipt

**Anti-Factor B Antibody - Protein Information****Name** CFB**Synonyms** BF, BFD**Function**

Factor B which is part of the alternate pathway of the complement system is cleaved by factor D into 2 fragments: Ba and Bb. Bb, a serine protease, then combines with complement factor 3b to generate the C3 or C5 convertase. It has also been implicated in proliferation and differentiation of preactivated B-lymphocytes, rapid spreading of peripheral blood monocytes, stimulation of lymphocyte blastogenesis and lysis of erythrocytes. Ba inhibits the proliferation of preactivated B-lymphocytes.

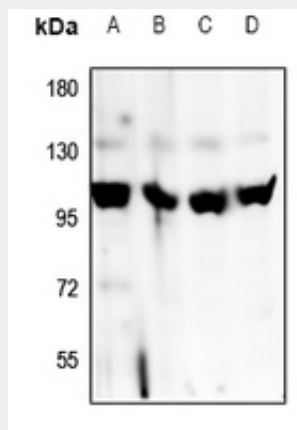
**Cellular Location**  
Secreted.

### Anti-Factor B Antibody - Protocols

Provided below are standard protocols that you may find useful for product applications.

- [Western Blot](#)
- [Blocking Peptides](#)
- [Dot Blot](#)
- [Immunohistochemistry](#)
- [Immunofluorescence](#)
- [Immunoprecipitation](#)
- [Flow Cytometry](#)
- [Cell Culture](#)

### Anti-Factor B Antibody - Images



Western blot analysis of Factor B expression in A549 (A), HepG2 (B), PC12 (C), CT26 (D) whole cell lysates.

### Anti-Factor B Antibody - Background

KLH-conjugated synthetic peptide encompassing a sequence within the center region of human Factor B. The exact sequence is proprietary.