

**Anti-hnRNP LL Antibody**  
Rabbit polyclonal antibody to hnRNP LL  
Catalog # AP60136

### Specification

---

#### Anti-hnRNP LL Antibody - Product Information

Application	WB
Primary Accession	<a href="#">O8WVV9</a>
Other Accession	<a href="#">O921F4</a>
Reactivity	Human, Mouse, Bovine
Host	Rabbit
Clonality	Polyclonal
Calculated MW	60083

#### Anti-hnRNP LL Antibody - Additional Information

Gene ID 92906

#### Other Names

SRRF; Heterogeneous nuclear ribonucleoprotein L-like; hnRNPLL; Stromal RNA-regulating factor

#### Target/Specificity

Recognizes endogenous levels of hnRNP LL protein.

#### Dilution

WB~~WB (1/500 - 1/1000), IH (1/100 - 1/200)

#### Format

Liquid in 0.42% Potassium phosphate, 0.87% Sodium chloride, pH 7.3, 30% glycerol, and 0.09% (W/V) sodium azide.

#### Storage

Store at -20 °C. Stable for 12 months from date of receipt

#### Anti-hnRNP LL Antibody - Protein Information

Name HNRNPLL

Synonyms HNRPLL, SRRF

#### Function

RNA-binding protein that functions as a regulator of alternative splicing for multiple target mRNAs, including PTPRC/CD45 and STAT5A. Required for alternative splicing of PTPRC.

#### Tissue Location

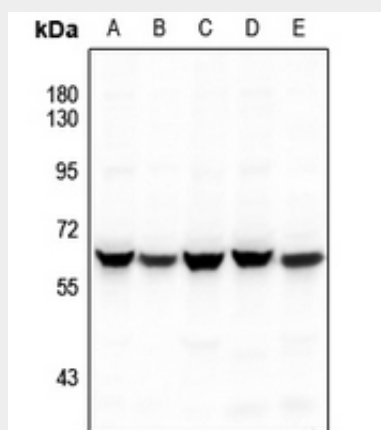
Widely expressed. Detected in bone marrow stroma cells, skeletal muscle, heart, placenta, pancreas, kidney and lung

## Anti-hnRNP LL Antibody - Protocols

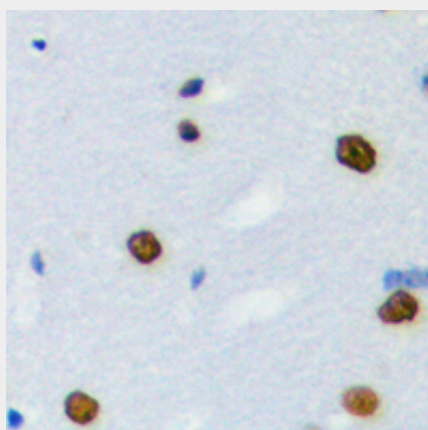
Provided below are standard protocols that you may find useful for product applications.

- [Western Blot](#)
- [Blocking Peptides](#)
- [Dot Blot](#)
- [Immunohistochemistry](#)
- [Immunofluorescence](#)
- [Immunoprecipitation](#)
- [Flow Cytometry](#)
- [Cell Culture](#)

## Anti-hnRNP LL Antibody - Images



Western blot analysis of hnRNP LL expression in HCT116 (A), HepG2 (B), MCF7 (C), A549 (D), H1792 (E) whole cell lysates.



Immunohistochemical analysis of hnRNP LL staining in human brain formalin fixed paraffin embedded tissue section. The section was pre-treated using heat mediated antigen retrieval with sodium citrate buffer (pH 6.0). The section was then incubated with the antibody at room temperature and detected using an HRP conjugated compact polymer system. DAB was used as the chromogen. The section was then counterstained with haematoxylin and mounted with DPX.

## Anti-hnRNP LL Antibody - Background

KLH-conjugated synthetic peptide encompassing a sequence within the center region of human

hnRNP LL. The exact sequence is proprietary.