

Anti-Alpha-adducin (pS726/713) Antibody
Rabbit polyclonal antibody to Alpha-adducin (pS726/713)
Catalog # AP60131**Specification**

Anti-Alpha-adducin (pS726/713) Antibody - Product Information

Application	WB, IF
Primary Accession	P35611 , P35612
Other Accession	Q9OYCO , Q9OYB8
Reactivity	Human, Mouse, Rat, Pig
Host	Rabbit
Clonality	Polyclonal

Anti-Alpha-adducin (pS726/713) Antibody - Additional Information**Other Names**

ADD1; ADDA; Alpha-adducin; Erythrocyte adducin subunit alpha; ADD2; ADDB; Beta-adducin; Erythrocyte adducin subunit beta

Target/Specificity

Recognizes endogenous levels of Alpha-adducin (pS726/713) protein.

Dilution

WB~~WB (1/500 - 1/1000), IF/IC (1/100 - 1/500), IP (1/10 - 1/100)
IF~~WB (1/500 - 1/1000), IF/IC (1/100 - 1/500), IP (1/10 - 1/100)

Format

Liquid in 0.42% Potassium phosphate, 0.87% Sodium chloride, pH 7.3, 30% glycerol, and 0.09% (W/V) sodium azide.

Storage

Store at -20 °C. Stable for 12 months from date of receipt

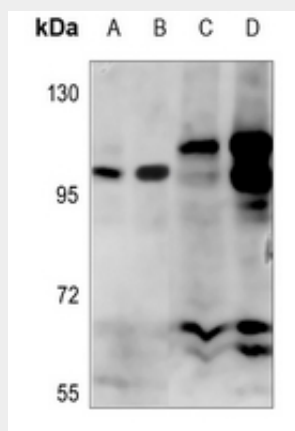
Anti-Alpha-adducin (pS726/713) Antibody - Protein Information**Anti-Alpha-adducin (pS726/713) Antibody - Protocols**

Provided below are standard protocols that you may find useful for product applications.

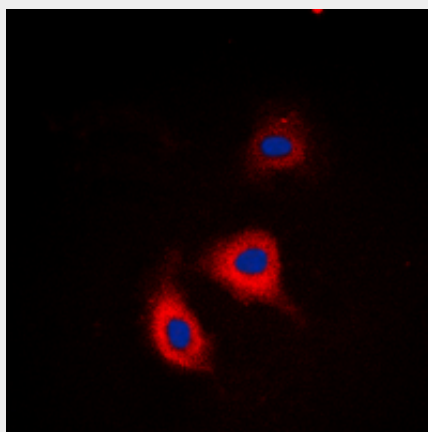
- [Western Blot](#)
- [Blocking Peptides](#)
- [Dot Blot](#)
- [Immunohistochemistry](#)
- [Immunofluorescence](#)
- [Immunoprecipitation](#)
- [Flow Cytometry](#)

- [Cell Culture](#)

Anti-Alpha-adducin (pS726/713) Antibody - Images



Western blot analysis of Alpha-adducin (pS726/713) expression in A549 (A), H446 (B), rat liver (C), rat kidney (D) whole cell lysates.



Immunofluorescent analysis of Alpha-adducin (pS726/713) staining in HeLa cells. Formalin-fixed cells were permeabilized with 0.1% Triton X-100 in TBS for 5-10 minutes and blocked with 3% BSA-PBS for 30 minutes at room temperature. Cells were probed with the primary antibody in 3% BSA-PBS and incubated overnight at 4 °C in a humidified chamber. Cells were washed with PBST and incubated with a DyLight 594-conjugated secondary antibody (red) in PBS at room temperature in the dark. DAPI was used to stain the cell nuclei (blue).

Anti-Alpha-adducin (pS726/713) Antibody - Background

KLH-conjugated synthetic peptide encompassing a sequence within the C-term region of human Alpha-adducin (pS726/713). The exact sequence is proprietary.