

**Anti-CDKL4 Antibody**  
**Rabbit polyclonal antibody to CDKL4**  
**Catalog # AP60129****Specification**

---

**Anti-CDKL4 Antibody - Product Information**

Application	<b>WB, IF</b>
Primary Accession	<a href="#">O5MAI5</a>
Other Accession	<a href="#">O3TZA2</a>
Reactivity	<b>Human, Mouse, Rat</b>
Host	<b>Rabbit</b>
Clonality	<b>Polyclonal</b>
Calculated MW	<b>43384</b>

**Anti-CDKL4 Antibody - Additional Information****Gene ID** 344387**Other Names**

Cyclin-dependent kinase-like 4

**Target/Specificity**

Recognizes endogenous levels of CDKL4 protein.

**Dilution**

WB~~WB (1/500 - 1/1000), IH (1/100 - 1/200), IF/IC (1/100 - 1/500)

IF~~WB (1/500 - 1/1000), IH (1/100 - 1/200), IF/IC (1/100 - 1/500)

**Format**

Liquid in 0.42% Potassium phosphate, 0.87% Sodium chloride, pH 7.3, 30% glycerol, and 0.09% (W/V) sodium azide.

**Storage**

Store at -20 °C. Stable for 12 months from date of receipt

**Anti-CDKL4 Antibody - Protein Information****Name** CDKL4**Cellular Location**

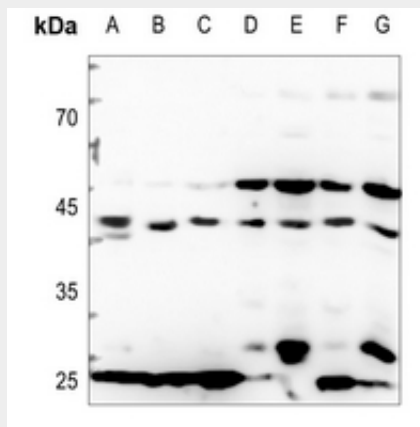
Cytoplasm.

**Anti-CDKL4 Antibody - Protocols**

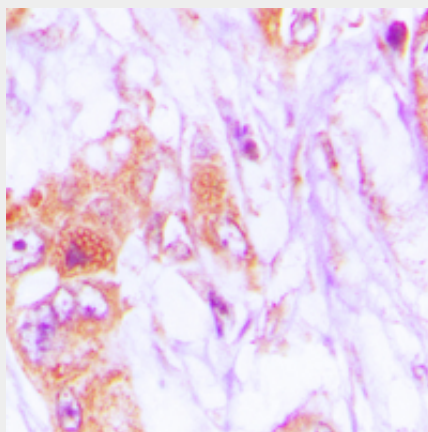
Provided below are standard protocols that you may find useful for product applications.

- [Western Blot](#)
- [Blocking Peptides](#)
- [Dot Blot](#)
- [Immunohistochemistry](#)
- [Immunofluorescence](#)
- [Immunoprecipitation](#)
- [Flow Cytometry](#)
- [Cell Culture](#)

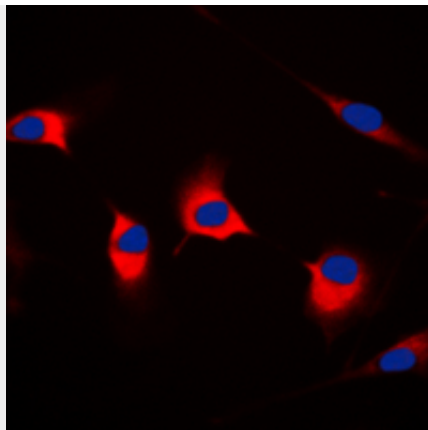
#### Anti-CDKL4 Antibody - Images



Western blot analysis of CDKL4 expression in HEK293T (A), A549 (B), mouse testis (C), mouse spleen (D), rat testis (E), rat spleen (F) whole cell lysates.



Immunohistochemical analysis of CDKL4 staining in human lung cancer formalin fixed paraffin embedded tissue section. The section was pre-treated using heat mediated antigen retrieval with sodium citrate buffer (pH 6.0). The section was then incubated with the antibody at room temperature and detected using an HRP conjugated compact polymer system. DAB was used as the chromogen. The section was then counterstained with haematoxylin and mounted with DPX.



Immunofluorescent analysis of CDKL4 staining in MCF7 cells. Formalin-fixed cells were permeabilized with 0.1% Triton X-100 in TBS for 5-10 minutes and blocked with 3% BSA-PBS for 30 minutes at room temperature. Cells were probed with the primary antibody in 3% BSA-PBS and incubated overnight at 4 °C in a humidified chamber. Cells were washed with PBST and incubated with a DyLight 594-conjugated secondary antibody (red) in PBS at room temperature in the dark. DAPI was used to stain the cell nuclei (blue).

#### **Anti-CDKL4 Antibody - Background**

KLH-conjugated synthetic peptide encompassing a sequence within the C-term region of human CDKL4. The exact sequence is proprietary.