

**Anti-Adenylate Cyclase 4 Antibody**  
Rabbit polyclonal antibody to Adenylate Cyclase 4  
Catalog # AP60128

**Specification**

---

**Anti-Adenylate Cyclase 4 Antibody - Product Information**

Application	WB
Primary Accession	<a href="#">O8NFM4</a>
Other Accession	<a href="#">O91WF3</a>
Reactivity	Human, Mouse, Rat
Host	Rabbit
Clonality	Polyclonal
Calculated MW	119794

**Anti-Adenylate Cyclase 4 Antibody - Additional Information**

**Gene ID** 196883

**Other Names**

Adenylate cyclase type 4; ATP pyrophosphate-lyase 4; Adenylate cyclase type IV; Adenylyl cyclase 4

**Target/Specificity**

Recognizes endogenous levels of Adenylate Cyclase 4 protein.

**Dilution**

WB~~WB (1/500 - 1/1000)

**Format**

Liquid in 0.42% Potassium phosphate, 0.87% Sodium chloride, pH 7.3, 30% glycerol, and 0.09% (W/V) sodium azide.

**Storage**

Store at -20 °C. Stable for 12 months from date of receipt

**Anti-Adenylate Cyclase 4 Antibody - Protein Information**

**Name** ADCY4

**Function**

Catalyzes the formation of the signaling molecule cAMP in response to G-protein signaling.

**Cellular Location**

Cell membrane; Multi-pass membrane protein. Cytoplasm

**Tissue Location**

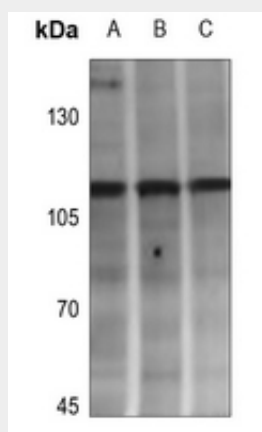
Detected in the zona glomerulosa and the zona fasciculata in the adrenal gland (at protein level)

## Anti-Adenylate Cyclase 4 Antibody - Protocols

Provided below are standard protocols that you may find useful for product applications.

- [Western Blot](#)
- [Blocking Peptides](#)
- [Dot Blot](#)
- [Immunohistochemistry](#)
- [Immunofluorescence](#)
- [Immunoprecipitation](#)
- [Flow Cytometry](#)
- [Cell Culture](#)

## Anti-Adenylate Cyclase 4 Antibody - Images



Western blot analysis of Adenylate Cyclase 4 expression in HEK293T (A), HCT116 (B), A549 (C) whole cell lysates.

## Anti-Adenylate Cyclase 4 Antibody - Background

KLH-conjugated synthetic peptide encompassing a sequence within the center region of human Adenylate Cyclase 4. The exact sequence is proprietary.