

Anti-DQX1 Antibody
Rabbit polyclonal antibody to DQX1
Catalog # AP60127

Specification

Anti-DQX1 Antibody - Product Information

Application	WB
Primary Accession	O8TE96
Other Accession	O924H9
Reactivity	Human, Mouse, Rat, Monkey
Host	Rabbit
Clonality	Polyclonal
Calculated MW	79476

Anti-DQX1 Antibody - Additional Information

Gene ID 165545

Other Names

ATP-dependent RNA helicase DQX1; DEAQ box polypeptide 1

Target/Specificity

Recognizes endogenous levels of DQX1 protein.

Dilution

WB~~WB (1/500 - 1/1000)

Format

Liquid in 0.42% Potassium phosphate, 0.87% Sodium chloride, pH 7.3, 30% glycerol, and 0.09% (W/V) sodium azide.

Storage

Store at -20 °C. Stable for 12 months from date of receipt

Anti-DQX1 Antibody - Protein Information

Name DQX1

Cellular Location

Nucleus.

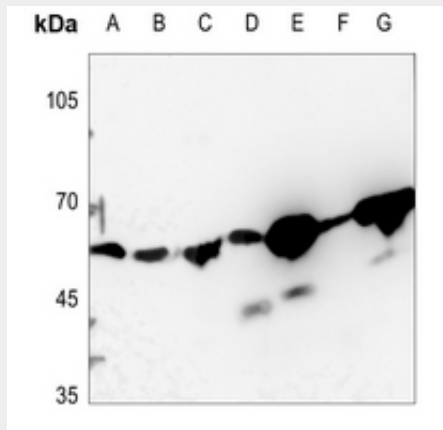
Anti-DQX1 Antibody - Protocols

Provided below are standard protocols that you may find useful for product applications.

- [Western Blot](#)

- [Blocking Peptides](#)
- [Dot Blot](#)
- [Immunohistochemistry](#)
- [Immunofluorescence](#)
- [Immunoprecipitation](#)
- [Flow Cytometry](#)
- [Cell Culture](#)

Anti-DQX1 Antibody - Images



Western blot analysis of DQX1 expression in A375 (A), U2OS (B), DLD (C), mouse kidney (D), mouse muscle (E), rat kidney (F), rat muscle (G) whole cell lysates.

Anti-DQX1 Antibody - Background

KLH-conjugated synthetic peptide encompassing a sequence within the C-term region of human DQX1. The exact sequence is proprietary.