

Anti-AKR1CL2 Antibody
Rabbit polyclonal antibody to AKR1CL2
Catalog # AP60120

Specification

Anti-AKR1CL2 Antibody - Product Information

Application	WB
Primary Accession	O96JD6
Other Accession	O9DCT1
Reactivity	Human, Mouse, Rat, Monkey, Pig
Host	Rabbit
Clonality	Polyclonal
Calculated MW	36589

Anti-AKR1CL2 Antibody - Additional Information

Gene ID 83592

Other Names

AKR1CL2; AKRDC1; 1, 5-anhydro-D-fructose reductase; AF reductase; Aldo-keto reductase family 1 member C-like protein 2; Aldo-keto reductase family 1 member E2; LoopADR; Testis-specific protein; hTSP

Target/Specificity

Recognizes endogenous levels of AKR1CL2 protein.

Dilution

WB~~WB (1/500 - 1/1000), IH (1/100 - 1/200)

Format

Liquid in 0.42% Potassium phosphate, 0.87% Sodium chloride, pH 7.3, 30% glycerol, and 0.09% (W/V) sodium azide.

Storage

Store at -20 °C. Stable for 12 months from date of receipt

Anti-AKR1CL2 Antibody - Protein Information

Name AKR1E2

Synonyms AKR1CL2, AKRDC1

Function

Catalyzes the NADPH-dependent reduction of 1,5-anhydro-D- fructose (AF) to 1,5-anhydro-D-glucitol (By similarity). Has low NADPH- dependent reductase activity towards 9,10-phenanthrenequinone (in vitro) (PubMed:12604216, PubMed:15118078).

Cellular Location

Cytoplasm.

Tissue Location

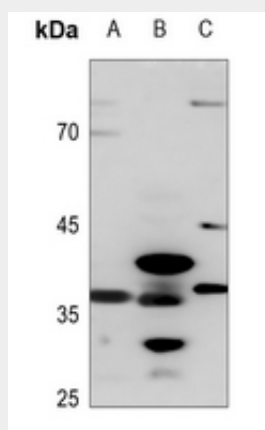
Specifically expressed in testis (PubMed:12604216, PubMed:15118078). Expressed in testicular germ cells and testis interstitial cells (PubMed:15118078).

Anti-AKR1CL2 Antibody - Protocols

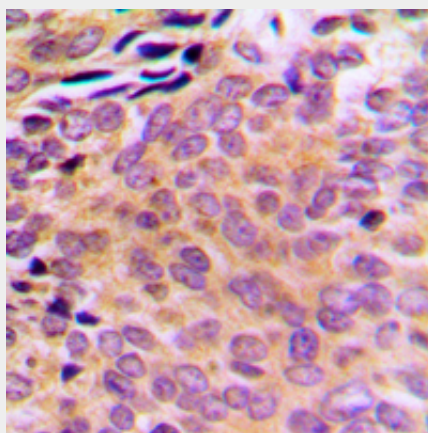
Provided below are standard protocols that you may find useful for product applications.

- [Western Blot](#)
- [Blocking Peptides](#)
- [Dot Blot](#)
- [Immunohistochemistry](#)
- [Immunofluorescence](#)
- [Immunoprecipitation](#)
- [Flow Cytometry](#)
- [Cell Culture](#)

Anti-AKR1CL2 Antibody - Images



Western blot analysis of AKR1CL2 expression in mouse muscle (A), rat kidney (B), rat testis (C) whole cell lysates.



Immunohistochemical analysis of AKR1CL2 staining in human breast cancer formalin fixed

paraffin embedded tissue section. The section was pre-treated using heat mediated antigen retrieval with sodium citrate buffer (pH 6.0). The section was then incubated with the antibody at room temperature and detected using an HRP conjugated compact polymer system. DAB was used as the chromogen. The section was then counterstained with haematoxylin and mounted with DPX.

Anti-AKR1CL2 Antibody - Background

KLH-conjugated synthetic peptide encompassing a sequence within the center region of human AKR1CL2. The exact sequence is proprietary.