

Anti-CEP70 Antibody
Rabbit polyclonal antibody to CEP70
Catalog # AP60119

Specification

Anti-CEP70 Antibody - Product Information

Application	WB
Primary Accession	O8NHQ1
Reactivity	Human, Mouse, Rat
Host	Rabbit
Clonality	Polyclonal
Calculated MW	69752

Anti-CEP70 Antibody - Additional Information

Gene ID 80321

Other Names

BITE; Centrosomal protein of 70 kDa; Cep70; p10-binding protein

Target/Specificity

Recognizes endogenous levels of CEP70 protein.

Dilution

WB~~WB (1/500 - 1/1000), IH (1/100 - 1/200)

Format

Liquid in 0.42% Potassium phosphate, 0.87% Sodium chloride, pH 7.3, 30% glycerol, and 0.09% (W/V) sodium azide.

Storage

Store at -20 °C. Stable for 12 months from date of receipt

Anti-CEP70 Antibody - Protein Information

Name CEP70

Synonyms BITE

Function

Plays a role in the organization of both preexisting and nascent microtubules in interphase cells. During mitosis, required for the organization and orientation of the mitotic spindle.

Cellular Location

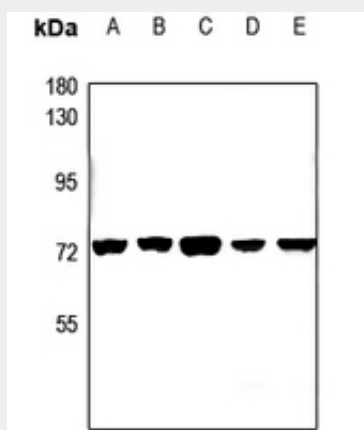
Cytoplasm, cytoskeleton, microtubule organizing center, centrosome. Note=Localized at the center of the radial microtubule array in interphase and at the spindle poles during various stages of mitosis

Anti-CEP70 Antibody - Protocols

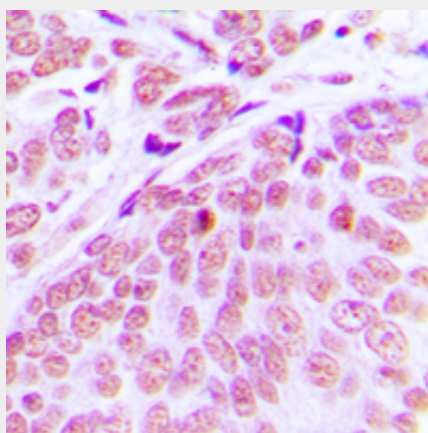
Provided below are standard protocols that you may find useful for product applications.

- [Western Blot](#)
- [Blocking Peptides](#)
- [Dot Blot](#)
- [Immunohistochemistry](#)
- [Immunofluorescence](#)
- [Immunoprecipitation](#)
- [Flow Cytometry](#)
- [Cell Culture](#)

Anti-CEP70 Antibody - Images



Western blot analysis of CEP70 expression in CT26 (A), PC12 (B), Hela (C), H1792 (D), A549 (E) whole cell lysates.



Immunohistochemical analysis of CEP70 staining in human breast cancer formalin fixed paraffin embedded tissue section. The section was pre-treated using heat mediated antigen retrieval with sodium citrate buffer (pH 6.0). The section was then incubated with the antibody at room temperature and detected using an HRP conjugated compact polymer system. DAB was used as the chromogen. The section was then counterstained with haematoxylin and mounted with DPX.

Anti-CEP70 Antibody - Background

KLH-conjugated synthetic peptide encompassing a sequence within the center region of human

CEP70. The exact sequence is proprietary.