

Anti-CCP2 Antibody
Rabbit polyclonal antibody to CCP2
Catalog # AP60116

Specification

Anti-CCP2 Antibody - Product Information

Application	WB
Primary Accession	Q5U5Z8
Other Accession	Q8CDK2
Reactivity	Human, Mouse, Rat, Monkey
Host	Rabbit
Clonality	Polyclonal
Calculated MW	104194

Anti-CCP2 Antibody - Additional Information

Gene ID 79841

Other Names

CCP2; Cytosolic carboxypeptidase 2; ATP/GTP-binding protein-like 2

Target/Specificity

Recognizes endogenous levels of CCP2 protein.

Dilution

WB~~WB (1/500 - 1/1000), IH (1/100 - 1/200)

Format

Liquid in 0.42% Potassium phosphate, 0.87% Sodium chloride, pH 7.3, 30% glycerol, and 0.09% (W/V) sodium azide.

Storage

Store at -20 °C. Stable for 12 months from date of receipt

Anti-CCP2 Antibody - Protein Information

Name AGBL2 ([HGNC:26296](#))

Function

Metalloprotease that mediates deglutamylation of tubulin and non-tubulin target proteins. Catalyzes the removal of polyglutamate side chains present on the gamma-carboxyl group of glutamate residues within the C-terminal tail of tubulin protein. Specifically cleaves tubulin long-side-chains, while it is not able to remove the branching point glutamate. Also catalyzes the removal of polyglutamate residues from the carboxy-terminus of non-tubulin proteins such as MYLK.

Cellular Location

Cytoplasm, cytosol {ECO:0000250|UniProtKB:Q8CDK2}. Cytoplasm, cytoskeleton, microtubule

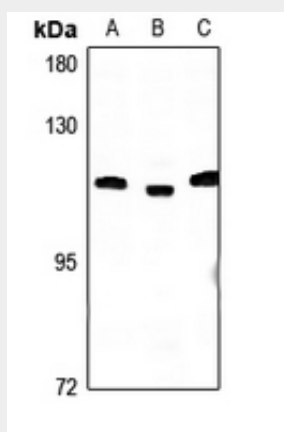
organizing center, centrosome, centriole Cytoplasm, cytoskeleton, cilium basal body.
Note=Colocalizes with gamma-tubulin in the centrioles and with glutamylated tubulin in the basal bodies of ciliated cells.

Anti-CCP2 Antibody - Protocols

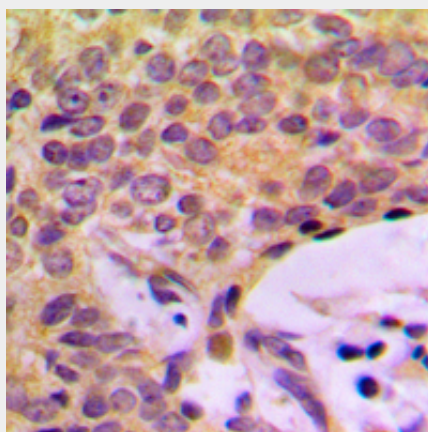
Provided below are standard protocols that you may find useful for product applications.

- [Western Blot](#)
- [Blocking Peptides](#)
- [Dot Blot](#)
- [Immunohistochemistry](#)
- [Immunofluorescence](#)
- [Immunoprecipitation](#)
- [Flow Cytometry](#)
- [Cell Culture](#)

Anti-CCP2 Antibody - Images



Western blot analysis of CCP2 expression in AML12 (A), PC12 (B), HeLa (C) whole cell lysates.



Immunohistochemical analysis of CCP2 staining in human breast cancer formalin fixed paraffin embedded tissue section. The section was pre-treated using heat mediated antigen retrieval with sodium citrate buffer (pH 6.0). The section was then incubated with the antibody at room temperature and detected using an HRP conjugated compact polymer system. DAB was used as the chromogen. The section was then counterstained with haematoxylin and mounted with DPX.

Anti-CCP2 Antibody - Background

KLH-conjugated synthetic peptide encompassing a sequence within the C-term region of human CCP2. The exact sequence is proprietary.