

Anti-MRPL11 Antibody
Rabbit polyclonal antibody to MRPL11
Catalog # AP60114

Specification

Anti-MRPL11 Antibody - Product Information

Application	WB, IF
Primary Accession	O9Y3B7
Reactivity	Human, Monkey
Host	Rabbit
Clonality	Polyclonal
Calculated MW	20683

Anti-MRPL11 Antibody - Additional Information

Gene ID 65003

Other Names

39S ribosomal protein L11 mitochondrial; L11mt; MRP-L11

Target/Specificity

Recognizes endogenous levels of MRPL11 protein.

Dilution

WB~~WB (1/500 - 1/1000), IH (1/100 - 1/200), IF/IC (1/100 - 1/500)
IF~~WB (1/500 - 1/1000), IH (1/100 - 1/200), IF/IC (1/100 - 1/500)

Format

Liquid in 0.42% Potassium phosphate, 0.87% Sodium chloride, pH 7.3, 30% glycerol, and 0.09% (W/V) sodium azide.

Storage

Store at -20 °C. Stable for 12 months from date of receipt

Anti-MRPL11 Antibody - Protein Information

Name MRPL11

Cellular Location

Mitochondrion

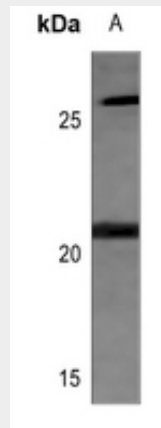
Anti-MRPL11 Antibody - Protocols

Provided below are standard protocols that you may find useful for product applications.

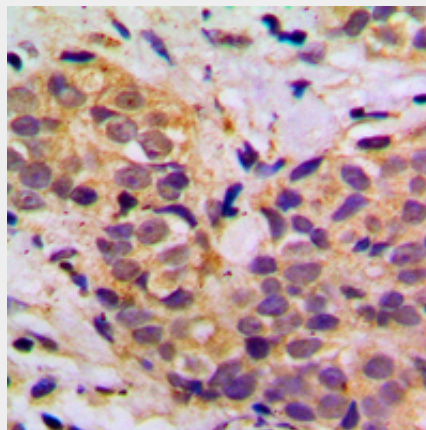
- [Western Blot](#)

- [Blocking Peptides](#)
- [Dot Blot](#)
- [Immunohistochemistry](#)
- [Immunofluorescence](#)
- [Immunoprecipitation](#)
- [Flow Cytometry](#)
- [Cell Culture](#)

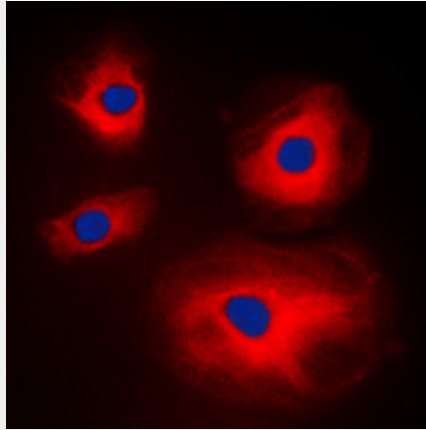
Anti-MRPL11 Antibody - Images



Western blot analysis of MRPL11 expression in mouse spleen (A) whole cell lysates.



Immunohistochemical analysis of MRPL11 staining in human breast cancer formalin fixed paraffin embedded tissue section. The section was pre-treated using heat mediated antigen retrieval with sodium citrate buffer (pH 6.0). The section was then incubated with the antibody at room temperature and detected using an HRP conjugated compact polymer system. DAB was used as the chromogen. The section was then counterstained with haematoxylin and mounted with DPX.



Immunofluorescent analysis of MRPL11 staining in A431 cells. Formalin-fixed cells were permeabilized with 0.1% Triton X-100 in TBS for 5-10 minutes and blocked with 3% BSA-PBS for 30 minutes at room temperature. Cells were probed with the primary antibody in 3% BSA-PBS and incubated overnight at 4 °C in a humidified chamber. Cells were washed with PBST and incubated with a DyLight 594-conjugated secondary antibody (red) in PBS at room temperature in the dark. DAPI was used to stain the cell nuclei (blue).

Anti-MRPL11 Antibody - Background

KLH-conjugated synthetic peptide encompassing a sequence within the center region of human MRPL11. The exact sequence is proprietary.